

CPN - Series

Prism Candy Cases Non-Climate Controlled



Features & Finishes

- Anodized Aluminum Frame
- Tempered Glass Front, Ends, & Top
- Aluminum Framed, Sliding Mirror Doors
- Tempered Glass Shelves (1-8" & 1-10")
- White HPL Exterior Finish
- White HPL Deck
- 6" Black Kick Base
- Top Light with T-8 Safety Coated Bulbs
- 12" Cord, Plug, & Switch
- U.L. #65 Wired Cabinet Listed



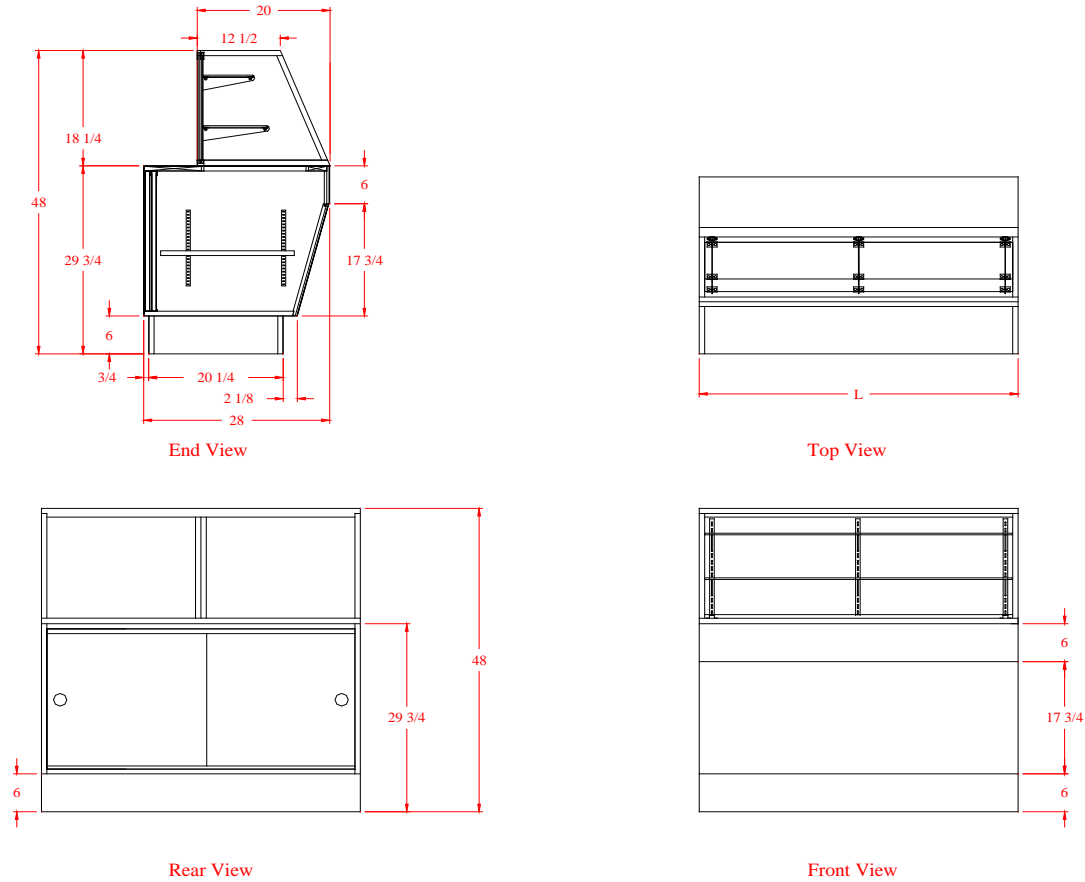
SPARTAN SHOWCASE IS A
DIVISION OF PROCK OPERATIONS™

sales@spartanshowcase.com
Phone: 800.325.0775
Fax: 573.265.5124



CPN - Series

Prism Candy Cases Non-Climate Controlled



6

Model No.	Dimensions L X W X H	Rows of Shelves	Est. Crated Weight	Options / Accessories to Customize Case
CPN-4	48" x 28" x 48"	2	430 lbs.	1. Powder Coat Finishes Available for Frame, Hardware, & Lights 2. Std. HPL Finish Base 3. Vented Doors 4. Mirror Ends 5. LED Lights
CPN-5	60" x 28" x 48"	2	500 lbs.	
CPN-6	70" x 28" x 48"	2	570 lbs.	

Specifications Subject to Change Without Notice



SPARTAN SHOWCASE IS A
DIVISION OF PROCK OPERATIONS™

sales@spartanshowcase.com
Phone: 800.325.0775
Fax: 573.265.5124

