

# CPN - C Series

Curve-Front Candy Cases Non-Climate Controlled



## Features & Finishes

- Curved Glass Front
- Aluminum Framed Sliding Mirror Doors
- Tempered Glass Shelves (1-12", 1-14")
- Mirror Ends
- Std. HPL Exterior Finish
- White HPL Deck
- 6" Black Kick Base
- Top Light with T-8 Safety Coated Bulbs
- 12" Cord, Plug, & Switch
- U.L. #65 Wired Cabinet Listed



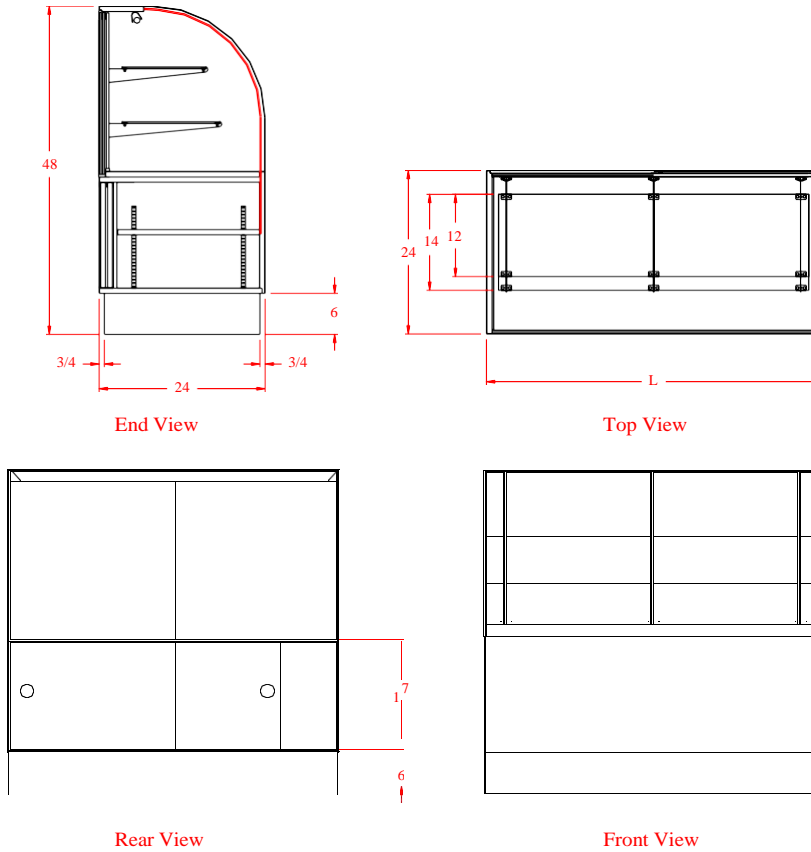
SPARTAN SHOWCASE IS A  
DIVISION OF PROCK OPERATIONS™

[sales@spartanshowcase.com](mailto:sales@spartanshowcase.com)  
Phone: 800.325.0775  
Fax: 573.265.5124



# CPN - C Series

## Curve-Front Candy Cases Non-Climate Controlled



Model No.	Dimensions L X W X H	Rows of Shelves	Est. Crated Weight	Options / Accessories to Customize Case
CPN-4C	48 1/4" x 24" x 48"	2	430 lbs.	1. Powder Coat Finishes Available for Frame, Hardware, & Lights 2. Std. HPL Exterior Finish 3. Vented Doors 4. Mirror Ends 5. LED Lights
CPN-5C	59 1/4" x 24" x 48"	2	500 lbs.	
CPN-6C	77 1/4" x 24" x 48"	2	570 lbs.	

Specifications Subject to Change Without Notice



SPARTAN SHOWCASE IS A  
DIVISION OF PROCK OPERATIONS™

sales@spartanshowcase.com  
Phone: 800.325.0775  
Fax: 573.265.5124

