

BC1600 Series Front Opening Showcases



Standard Specifications:

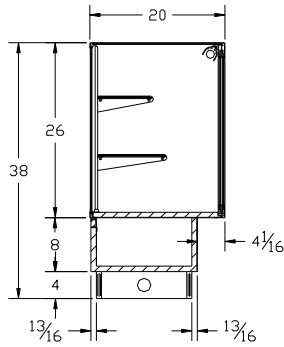
- 26" High Aluminum Framed Glass Module
- 8" High TFM Base with Corner Protection
(COLOR WHITE, BLACK, CHERRY WOODGRAIN)
- 4" High Black Kick
- Interior Decks & Panel Doors (TFM) White
- Tempered Glass Tops, Front, Ends, and Shelves
- Two Tier Adjustable Split Glass Shelves (1-8" & 1-10")
- 36" Unit Two Tier Adjustable One Piece Shelves (1-8" & 1-10")
- Anodized Silver Satin Finish Aluminum Frame

SPARTAN SHOWCASE IS A
DIVISION OF PROCK OPERATIONS™

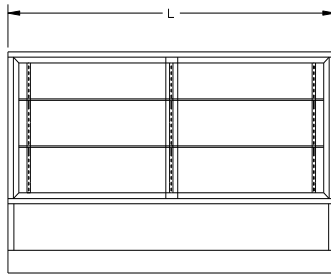
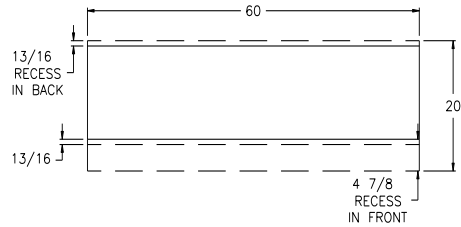
sales@spartanshowcase.com
Phone: 800.325.0775
Fax: 573.265.5124



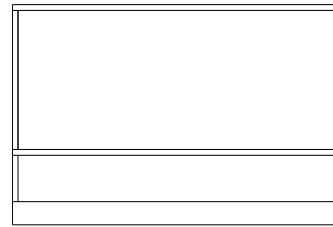
BC1600 Series Front Opening Showcases



SIDE ELEVATION



FRONT ELEVATION



REAR ELEVATION

Model No.	Dimensions:
	L X D X H
BC1672	72" x 20" x 38"
BC1606	70" x 20" x 38"
BC1605	60" x 20" x 38"
BC1604	48" x 20" x 38"

Case Options:

1. Mirror Ends in Place of Glass
2. Solid Ends in Place of Glass
3. Mirror Back in Place Solid Back
4. Tempered Glass Doors in Place of Panels Doors
5. Black TFM interior in Place of White
6. (HPL) Formica® or Wilsonart® in Place of (TFM)
7. Flush Base Front

8. Open Storage Base
9. No Metal Base Corner Protectors
10. 1000 Series Octron Light
11. MaxLED Light
12. UL Listed Cord
13. UL Wired Cabinet Label

SPARTAN SHOWCASE IS A
DIVISION OF PROCK OPERATIONS™

sales@spartanshowcase.com
Phone: 800.325.0775
Fax: 573.265.5124

