

98300 Series

Back-Wall Counters



Features & Finishes:

- Anodized Aluminum Frame
- 3/4" Sliding Doors
- 6" Black Kick Base
- Adjustable Bag Bins
- 32" Working Height
- White Interior
- White HPL Top and 8" Back Splash
- Raw Exterior Back
- White HPL Finish Front & Ends

SPARTAN SHOWCASE IS A
DIVISION OF PROCK OPERATIONS™

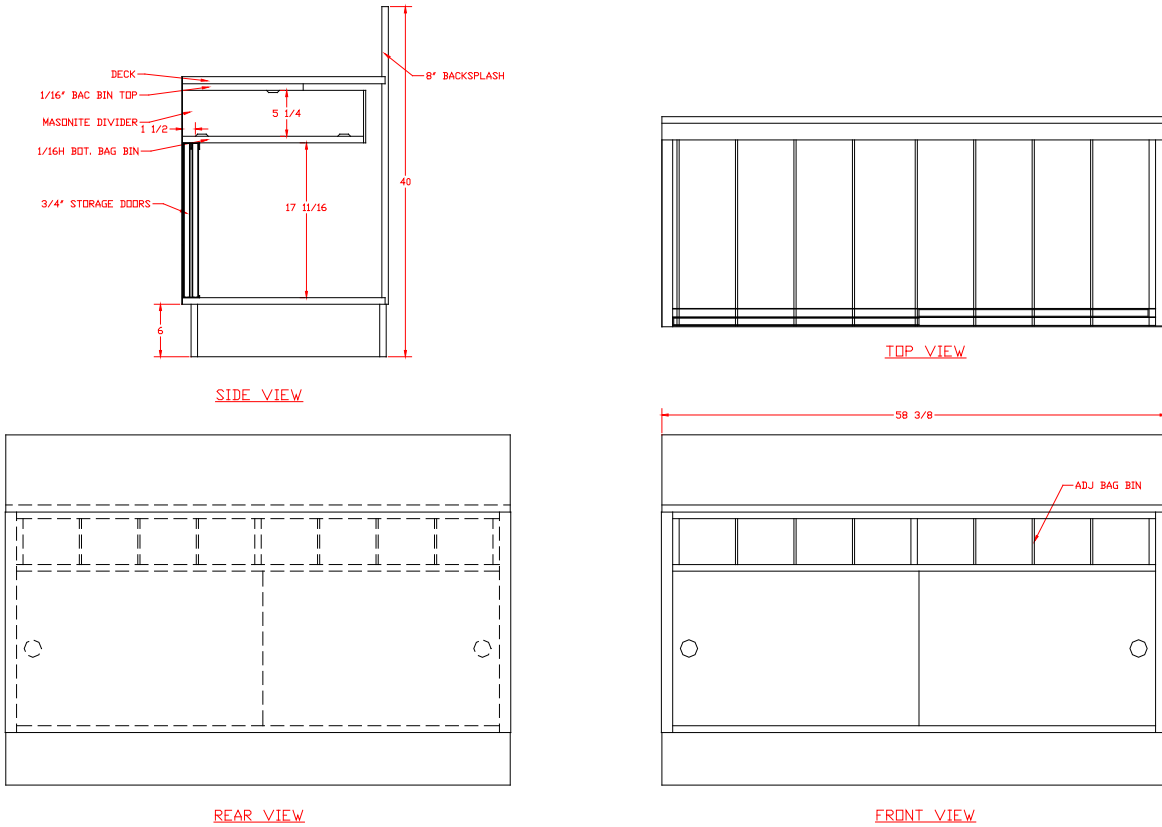
sales@spartanshowcase.com

Phone: 800.325.0775

Fax: 573.265.5124



9836



Model No.	Dimensions L X W X H	Est. Crated	Options / Accessories to Customize Case
98360-24	58 3/8" X 24" X 40"	410 lbs.	1. Adjustable Wood Shelf 2. Standard HPL Finish Exterior
98360-30	58 3/8" X 30" X 40"	430 lbs.	

Specification Subject to Change Without Notice

SPARTAN SHOWCASE IS A
DIVISION OF PROCK OPERATIONS™

sales@spartanshowcase.com
Phone: 800.325.0775
Fax: 573.265.5124

