

98100 Series

Service Wall Cases – Full View



Features & Finishes

- Anodized Aluminum Trim
- Aluminum Framed, Top Hung, Manual Sliding Tempered Glass Doors
- 7-Tier of Metal Shelf Pan Supports on Standards w/ Adjustable (Level to Slant) Brackets
- 6" Black Kick Base
- Unfinished Exterior Back
- White HPL Finish Front & Ends
- White Interior
- White HPL Interior Deck
- Vertical Side Lights with T-8 Safety Coated Bulbs
- 12" Cord, Plug & Switch
- U.L. #65 Wired Cabinet Listed



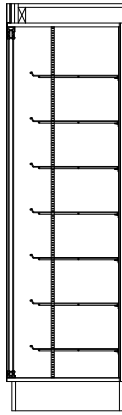
SPARTAN SHOWCASE IS A
DIVISION OF PROCK OPERATIONS™

sales@spartanshowcase.com
Phone: 800.325.0775
Fax: 573.265.5124

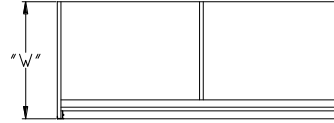


98100 Series

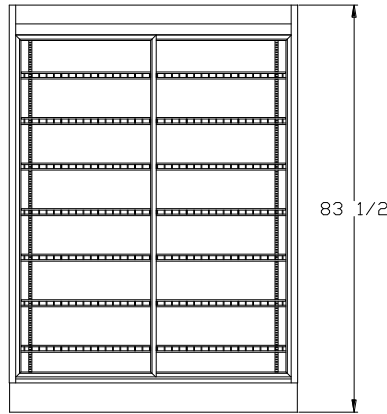
Service Wall Cases – Full View



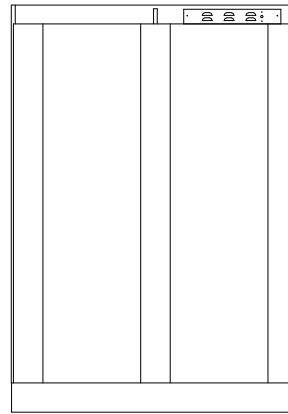
Side View



Top View



Front View



Rear View

Model No.	Dimensions L X W X H	Rows of Shelves	Est. Crated Weight	Pan Capacity	Options / Accessories to Customize Case
98160-24	58 1/2" X 24" X 83 1/2"	7	595 lbs.	16	<ol style="list-style-type: none"> 1. Powder Coat Finishes for Frame, Hardware, Lights, & Shelves 2. Mirror Ends 3. Mirror Back 4. Extra Row Wire Shelf – Display Area 5. Top Light with T-8 Safety Coated Bulbs 6. Removeable Shelf Lights with T-8 Safety Coated Bulbs 7. LED Lights 8. UL #962 with 10' Cord & Plug
98162-30	62 1/8" X 30" X 83 1/2"	7	660 lbs.	24	
98180-30	80 1/8" X 30" X 83 1/2"	7	780 lbs.	32	

Specifications Subject to Change Without Notice



SPARTAN SHOWCASE IS A
DIVISION OF PROCK OPERATIONS™

sales@spartanshowcase.com
Phone: 800.325.0775
Fax: 573.265.5124

