

# 98000 Series Service Wall Cases



## Features & Finishes

- Anodized Aluminum Trim
- Aluminum Framed, Top Hung, Manual Sliding Tempered Glass Doors
- 4-Tier of Metal Shelf Pan Supports on Standards w/ Adjustable (Level to Slant) Brackets
- 3/4" Manual Sliding Storage Doors
- 6" Black Kick Base
- Flush Bag Bin with Adjustable Bin Dividers
- Unfinished Exterior Back
- White HPL Finish Front & Ends
- White Interior
- White HPL Interior Deck
- Vertical Side Lights with T-8 Safety Coated Bulbs
- 12" Cord, Plug & Switch
- U.L. #65 Wired Cabinet Listed

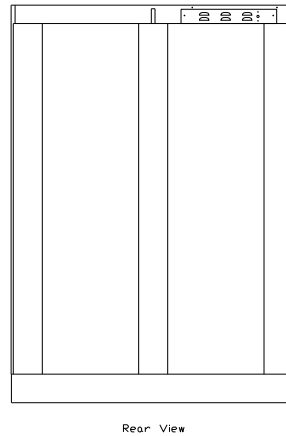
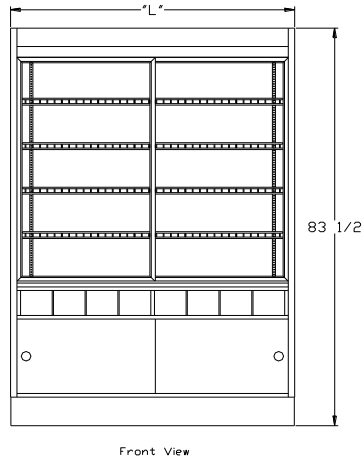
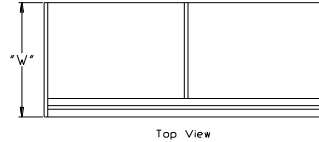
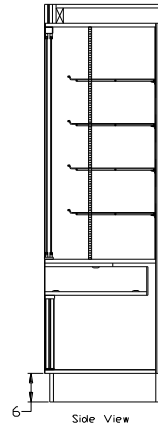


SPARTAN SHOWCASE IS A  
DIVISION OF PROCK OPERATIONS™

[sales@spartanshowcase.com](mailto:sales@spartanshowcase.com)  
Phone: 800.325.0775  
Fax: 573.265.5124



# 98000 Series Service Wall Cases



| Model No.  | Dimensions<br>L X W X H              | Rows<br>of<br>Shelves | Est.<br>Crated<br>Weight | Pan<br>Capacity | Options / Accessories to Customize Case  |
|------------|--------------------------------------|-----------------------|--------------------------|-----------------|--|
| 98060-24   | 58 1/2" X 24" X 83 1/2"              | 4                     | 610 lbs.                 | 10              | 1. Powder Coat Finishes for Frame, Hardware, Lights, & Shelves<br>2. Mirror Ends<br>3. Mirror Back<br>4. Extra Row Wire Shelf – Display Area<br>5. Adjustable Wood Shelf – Lower Storage<br>6. Top Light with T-8 Safety Coated Bulbs<br>7. Removeable Shelf Lights with T-8 Safety Coated Bulbs<br>8. LED Lights<br>9. UL #962 with 10' Cord & Plug |
| 98062-30   | 62 1/8" X 30" X 83 1/2"              | 4                     | 710 lbs.                 | 15              |  |
| 98080-30   | 80 1/8" X 30" X 83 1/2"              | 4                     | 950 lbs.                 | 20              |  |
| 98060-24RL | 58 1/2" X 26" X 83 1/2"              | 4                     | 630 lbs.                 | 10              |  |
| 98062-30RL | 62 1/8" X 32" X 83 1/2"              | 4                     | 740 lbs.                 | 15              |  |
| 98080-30RL | 80 1/8" X 32" X 83 1/2"              | 4                     | 980 lbs.                 | 20              |  |
|            | <i>RL = (Rear Load Mirror Doors)</i> |                       |                          |                 |  |

Specifications Subject to Change Without Notice



SPARTAN SHOWCASE IS A  
DIVISION OF PROCK OPERATIONS™

sales@spartanshowcase.com  
Phone: 800.325.0775  
Fax: 573.265.5124

