

# 92000 Series Countertop Display Cases



## Features & Finishes:

- Anodized Aluminum Frame
- Glass Front, Ends & Tops
- Aluminum Framed, Glass Door (s) (15" L-2)(29" L-1)
- White HPL Deck
- Glass Shelves
- Counter Top Protective Cushions

SPARTAN SHOWCASE IS A  
DIVISION OF PROCK OPERATIONS™

[sales@spartanshowcase.com](mailto:sales@spartanshowcase.com)  
Phone: 800.325.0775  
Fax: 573.265.5124

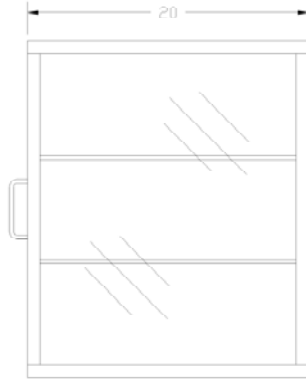


# 92000 Series Countertop Display Cases

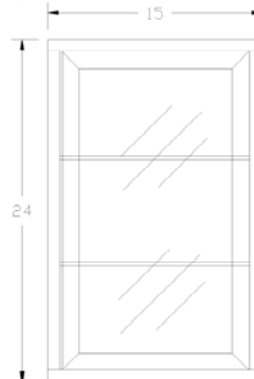
**92415**



**Top View**



**Side View**



**Front View**

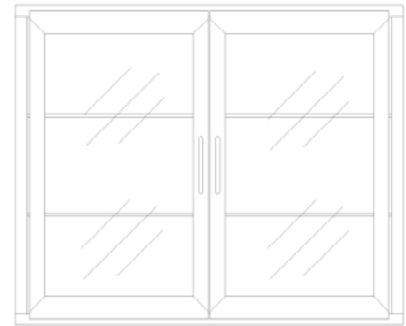
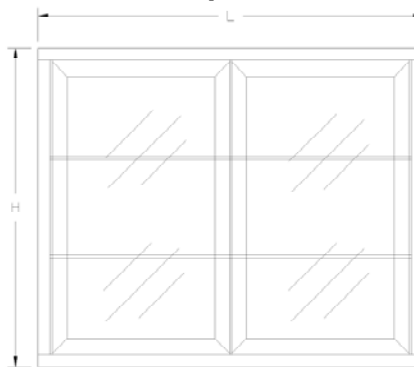
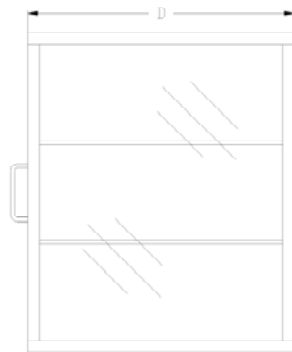


**Back View**

**92918, 92429 & 92932**



**Top View**



Side View		Front View		Back View
Model No.	Dimensions: L X D X H	Rows of Shelves	Est. Crated Weight	Case Options:
92415	15" x 20" x 24"	2	90 lbs.	<ol style="list-style-type: none"> <li>1. "ETL" Sanitation Listed (Conforms to NSF STD - 2)</li> <li>2. Pass - Through Doors Front &amp; Rear (Manual Closing)</li> <li>3. Acrylic Door (s) and Wire Shelves</li> <li>4. Mirror Back</li> <li>5. Extra Glass Shelf</li> </ol>
92918	29" x 20" x 18"	1	150 lbs.	
92429	29" x 20" x 24"	2	160 lbs.	
92932	29" x 20" x 32"	3	190 lbs.	

Specifications Subject to change without notice

SPARTAN SHOWCASE IS A  
DIVISION OF PROCK OPERATIONS™

sales@spartanshowcase.com  
Phone: 800.325.0775  
Fax: 573.265.5124

