

# 99058 Series Self-Serve Wall Cases



## Features & Finishes

- Self-Closing Frameless Tempered Glass Doors
- Continuous White Wire Shelves (4)
- Top & (4) Removeable Shelf Lights with T-8 Safety Coated Bulbs
- Solid Back
- Lower Front Solid Panel
- Pullout Package Ledge with Tissue Compartment
- Adjustable Bag Bins
- White Interior
- White HPL Finish Front & Ends
- Curved Radius Crown, Top Fascia (6" High)
- 6" Black Kick Base
- Air Vents in Top (3)
- 12" Cord, Plug & Switch
- U.L. #65 Wire Cabinet Listed

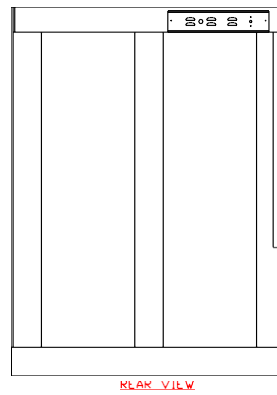
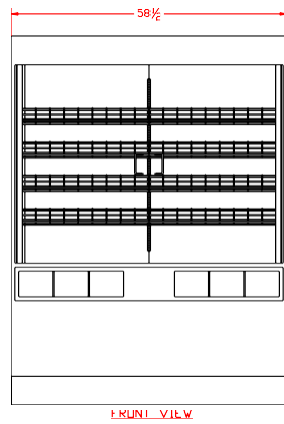
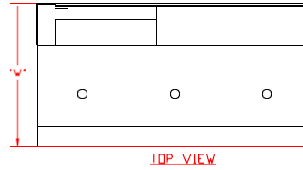
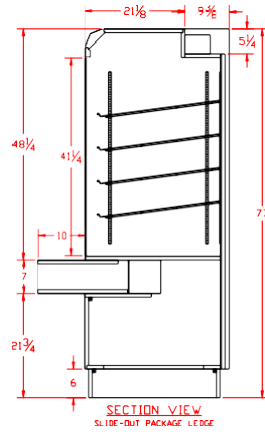


SPARTAN SHOWCASE IS A  
DIVISION OF PROCK OPERATIONS™

[sales@spartanshowcase.com](mailto:sales@spartanshowcase.com)  
Phone: 800.325.0775  
Fax: 573.265.5124



# 99058 Series Self-Serve Wall Cases



Model No.	Dimensions L X W X H	Rows Of Shelves	Pan Capacity	Est. Crated Weight	Options / Accessories to Customize Case
99058	58 1/2" x 30 1/2" x 77"	4	15	710 lbs.	1. ETL Sanitation Listed (Conforms to NSF STD-2) 2. Powder Coat Finishes Available for Frame, Hardware, Lights, & Shelves 3. Standard Exterior Finish 4. Mirror or Glass Ends 5. Mirror or Glass Back 6. Lower Front Storage Doors 7. Adjustable Wood Shelf (Storage Area) 8. Cart Bumper (Front, Ends, & Corners) 9. Extra Row Wire Shelf 10. Custom Heights, Lengths, Base Design Available 11. Square Crown, Top Fascia 6" High 12. Self-Closing Framed Tempered Glass Doors 13. Interior Light Switch 14. Bottom Mount Cord & Plug 15. U.L. #962 – 10' Cord & Plug 16. LED Lights
99058RL	58 1/2" x 32 1/2" x 77" <i>RL = Rear Load (Mirror Doors)</i>	4	15	740 lbs.	

Specifications Subject to Change Without Notice



SPARTAN SHOWCASE IS A  
DIVISION OF PROCK OPERATIONS™

sales@spartanshowcase.com  
Phone: 800.325.0775  
Fax: 573.265.5124

