

# 98000 Series Service Wall Cases



## Features & Finishes

- Anodized Aluminum Trim
- Aluminum Framed, Top Hung, Manual Sliding Tempered Glass Doors
- White Wire Shelves (4)
- 3/4" Manual Sliding Storage Doors
- 6" Black Kick Base
- Flush Bag Bin with Adjustable Bin Dividers
- Unfinished Exterior Back
- White HPL Finish Front & Ends
- White Interior
- White HPL Interior Deck
- Vertical Side Lights with T-8 Safety Coated Bulbs
- 12" Cord, Plug & Switch
- U.L. #65 Wired Cabinet Listed

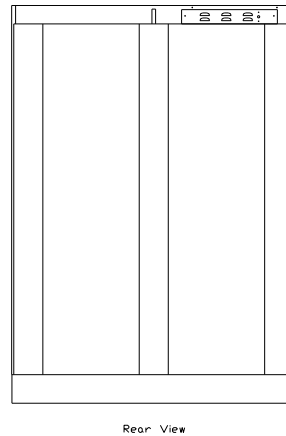
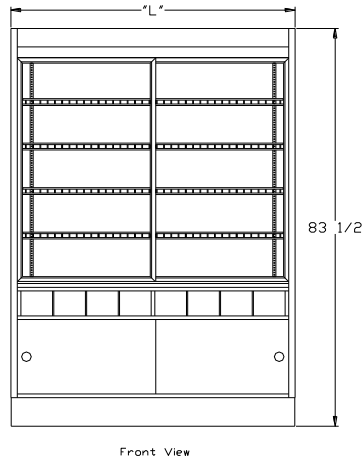
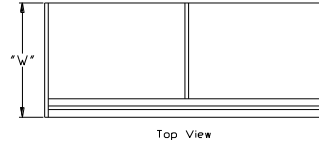
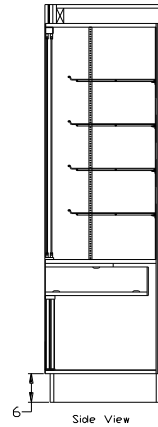


SPARTAN SHOWCASE IS A  
DIVISION OF PROCK OPERATIONS™

[sales@spartanshowcase.com](mailto:sales@spartanshowcase.com)  
Phone: 800.325.0775  
Fax: 573.265.5124



# 98000 Series Service Wall Cases



Model No.	Dimensions L X W X H	Rows of Shelves	Est. Crated Weight	Pan Capacity	Options / Accessories to Customize Case
98060-24	58 1/2" X 24" X 83 1/2"	4	610 lbs.	10	1. Powder Coat Finishes for Frame, Hardware, Lights, & Shelves 2. Mirror Ends 3. Mirror Back 4. Extra Row Wire Shelf – Display Area 5. Adjustable Wood Shelf – Lower Storage 6. Top Light with T-8 Safety Coated Bulbs 7. Removeable Shelf Lights with T-8 Safety Coated Bulbs 8. LED Lights 9. UL #962 with 10' Cord & Plug
98062-30	62 1/8" X 30" X 83 1/2"	4	710 lbs.	15	
98080-30	80 1/8" X 30" X 83 1/2"	4	950 lbs.	20	
98060-24RL	58 1/2" X 26" X 83 1/2"	4	630 lbs.	10	
98062-30RL	62 1/8" X 32" X 83 1/2"	4	740 lbs.	15	
98080-30RL	80 1/8" X 32" X 83 1/2"	4	980 lbs.	20	
<i>RL = (Rear Load Mirror Doors)</i>					

Specifications Subject to Change Without Notice



SPARTAN SHOWCASE IS A  
DIVISION OF PROCK OPERATIONS™

sales@spartanshowcase.com  
Phone: 800.325.0775  
Fax: 573.265.5124

