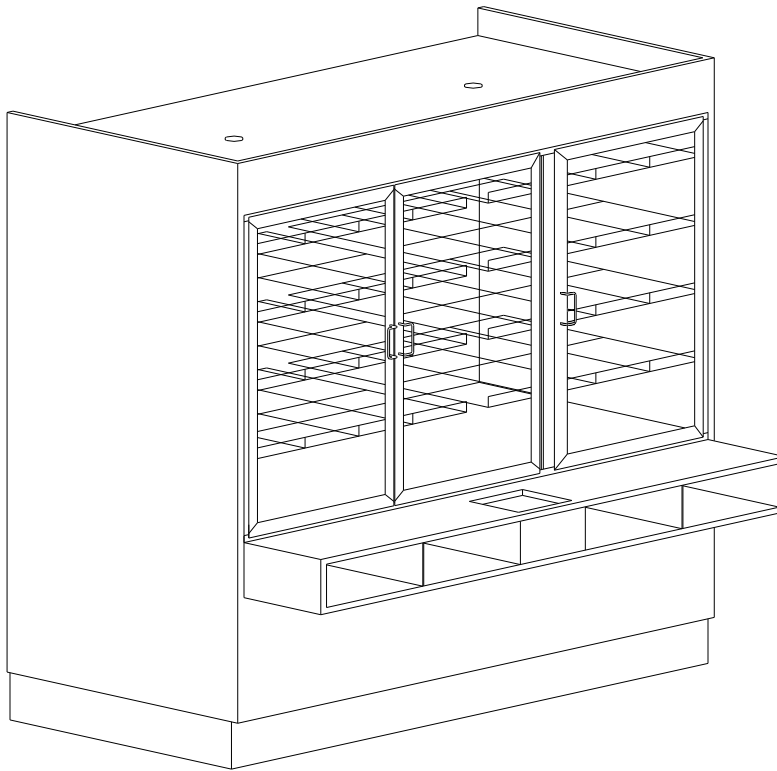


# 99000 Series Self-Serve Wall Cases



## Features & Finishes

- Self-Closing Framed Tempered Glass Doors (62"L - 3) (80"L - 4)
- White Wire Shelves (4)
- Top Light with T-8 Safety Coated Bulbs
- Vertical Front Lights with T-8 Safety Coated Bulbs (62"- 2) (80"-3)
- Solid Back
- Lower Front Solid Panel
- Pullout Package Ledge with Tissue Compartment
- Adjustable Bag Bins
- White Interior
- White HPL Finish Front & Ends
- Square Crown, Top Fascia (6" High)
- 6" Black Kick Base
- 12" Cord, Plug & Switch
- U.L. #65 Wire Cabinet Listed

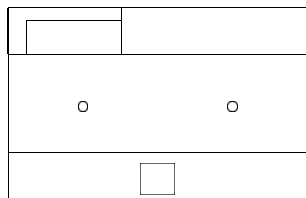


SPARTAN SHOWCASE IS A  
DIVISION OF PROCK OPERATIONS™

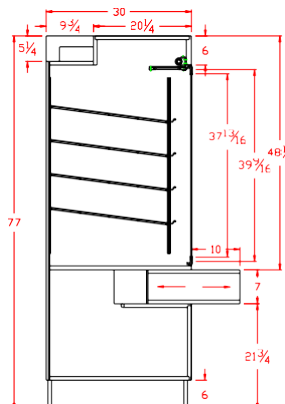
[sales@spartanshowcase.com](mailto:sales@spartanshowcase.com)  
Phone: 800.325.0775  
Fax: 573.265.5124



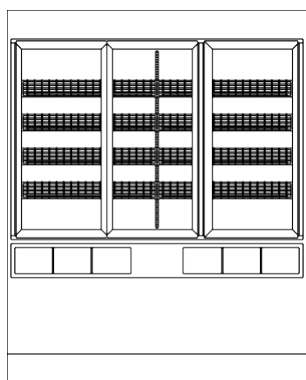
# 99000 Series Self-Serve Wall Cases



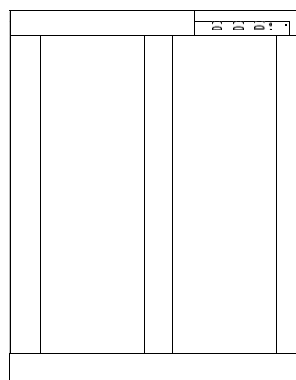
TOP VIEW



SECTION VIEW



FRONT VIEW



REAR VIEW

Model No.	Dimensions L X W X H	Rows Of Shelves	Pan Capacity	Est. Crated Weight	
99077-62	62" x 30" x 77"	4	15	710 lbs.	1. "ETL" Sanitation Listed (Conforms to NSF STD-2) 2. Powder Coat Finishes Available for Frame, Hardware, Lights, & Shelves 3. Standard Exterior Finish 4. Mirror or Glass Ends 5. Mirror or Glass Back 6. Lower Front or Rear Storage Doors 7. Adjustable Wood Shelf (Storage Area) 8. Cart Bumper (Front, Ends, & Corners) 9. Extra Row Wire Shelf 10. Custom Heights, Lengths, Base Design Available 11. Curved Radius Crown, Top Fascia 6" High 12. Self-Closing Frameless Tempered Glass Doors 13. Interior Light Switch 14. Bottom Mount Cord & Plug 15. U.L. #962 - 10' Cord & Plug 16. LED Lights
99077-80	80" x 30" x 77"	4	20	810 lbs.	
99077-62RL	62" x 32" x 77"	4	15	800 lbs.	
99077-80RL	80" x 32" x 77"	4	20	900 lbs.	
(RL = Rear Loading, Mirror Doors)					

Specifications Subject to Change Without Notice



SPARTAN SHOWCASE IS A  
DIVISION OF PROCK OPERATIONS™

sales@spartanshowcase.com  
Phone: 800.325.0775  
Fax: 573.265.5124

