

# 96600 Series Restaurant Case



## Features & Finishes

- Anodized Aluminum Frame
- Tempered Glass Front, Ends, & Top
- Aluminum Framed, Sliding Glass Doors
- Tempered Glass Shelves (1-10" & 1-12")
- White LPL Finish Base (No Storage)
- 4"H Black Kick
- Top Light with T-8 Safety Coated Bulb
- 12" Cord, Plug and Switch
- U.L. #65 Wired Cabinet Listed

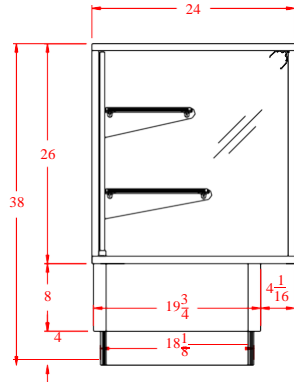


SPARTAN SHOWCASE IS A  
DIVISION OF PROCK OPERATIONS™

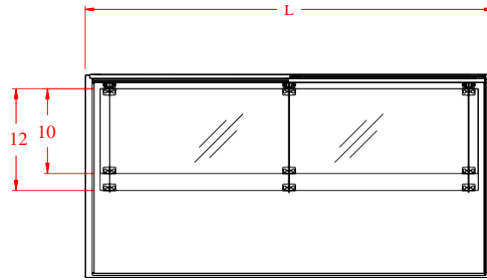
[sales@spartanshowcase.com](mailto:sales@spartanshowcase.com)  
Phone: 800.325.0775  
Fax: 573.265.5124



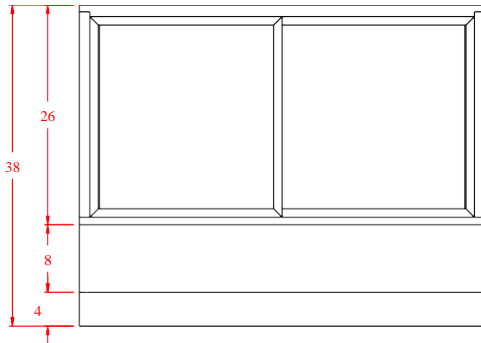
# 96600 Series Restaurant Case



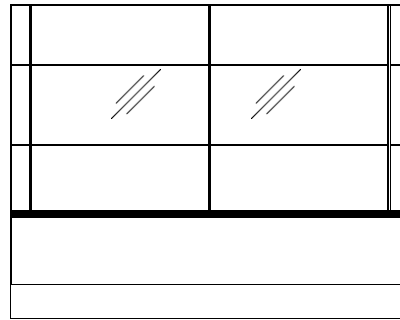
End View



Top View



Rear View



Front View

Model No.	Dimensions L x D x W	Rows of Shelves	Est. Crated Weight	Options / Accessories to Customize Case
96638-48	48" x 24" x 38"	2	235 lbs.	1. Std. Finish HPL Base 2. Mirror Doors 3. Mirror Ends 4. LED Lights
96638-60	60" x 24" x 38"	2	260 lbs.	
96638-70	70" x 24" x 38"	2	280 lbs.	

Specifications Subject to Change Without Notice



SPARTAN SHOWCASE IS A  
DIVISION OF PROCK OPERATIONS™

sales@spartanshowcase.com  
Phone: 800.325.0775  
Fax: 573.265.5124

