

# 92000 Series Countertop Display Cases



## Features & Finishes:

- Anodized Aluminum Frame
- Tempered Glass Front, Ends & Tops
- Aluminum Framed, Tempered Glass Door(s)
- White HPL Deck
- Tempered Glass Shelves
- Counter Top Protective Cushions
- For Clerk Serve - Door(s) to Rear
- For Customer Self-Serve - Door(s) to Front

SPARTAN SHOWCASE IS A  
DIVISION OF PROCK OPERATIONS™

[sales@spartanshowcase.com](mailto:sales@spartanshowcase.com)

Phone: 800.325.0775

Fax: 573.265.5124

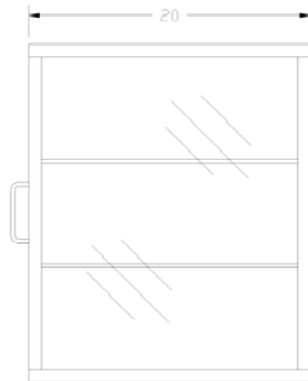


# 92000 Series Countertop Display Cases

## 92415



Top View



Side View



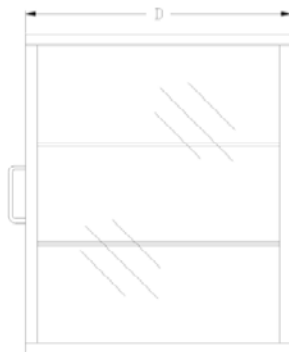
Front View – Clerk Serve



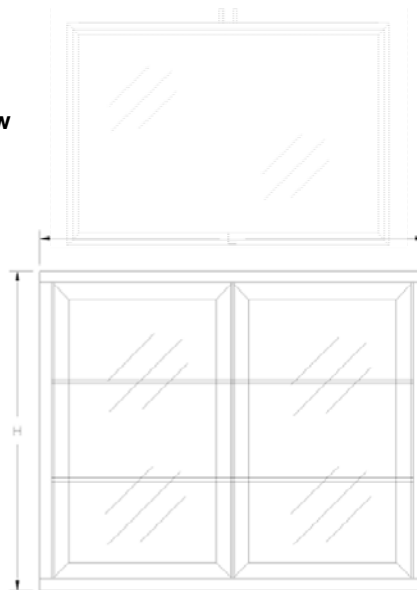
Rear View – Clerk Serve

## 92918, 92429 & 92932

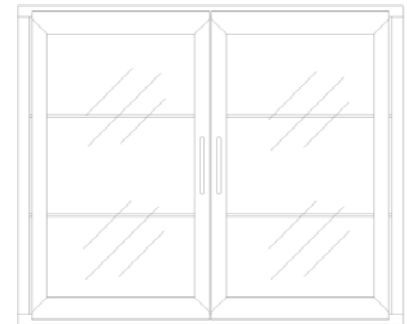
Top View



Side View



Front View – Clerk Serve



Rear View – Clerk Serve

| Model No. | Dimension<br>L X D X H | Rows of Shelves | Pan Capacity     |                  | Est. Crated Weight | Options / Accessories to<br>Customize Case           |  |
|-----------|------------------------|-----------------|------------------|------------------|--------------------|--|--|
|           |                        |                 | Full – 18" x 26" | Half – 13" x 18" |                    |  |  |
| 92415     | 15" x 20" x 24"        | 2               | 3 – Half         | 3 – Full         | 90 lbs.            | 1. "ETL" Sanitation Listed (Conforms to NSF STD - 2) |  |
| 92918     | 29" x 20" x 18"        | 1               | 2 – Full         | 2 – Full         | 150 lbs.           | 2. Frameless Acrylic Door(s) and Wire Shelves        |  |
| 92429     | 29" x 20" x 24"        | 2               | 3 – Full         | 3 – Full         | 160 lbs.           | 3. Framed Glass Door(s) and Wire Shelves             |  |
| 92932     | 29" x 20" x 32"        | 3               | 4 – Full         | 4 – Full         | 190 lbs.           | 4. Interior Mirror Back – Customer Self-Serve        |  |

**Cases May Be Used for Clerk Serve or Customer Serve  
Defined by position of Door(s)**

Specifications Subject to Change Without Notice

5. Interior Mirror Door(s) – Clerk Serve
6. Extra Tempered Glass Shelf
7. Extra Wire Shelf
8. Powder Coat Finishes Available for Frame & Hardware

SPARTAN SHOWCASE IS A  
DIVISION OF PROCK OPERATIONS™

sales@spartanshowcase.com  
Phone: 800.325.0775  
Fax: 573.265.5124

