

# W2550 Series Wall Display Showcase (with Drawers)



## Standard Specifications

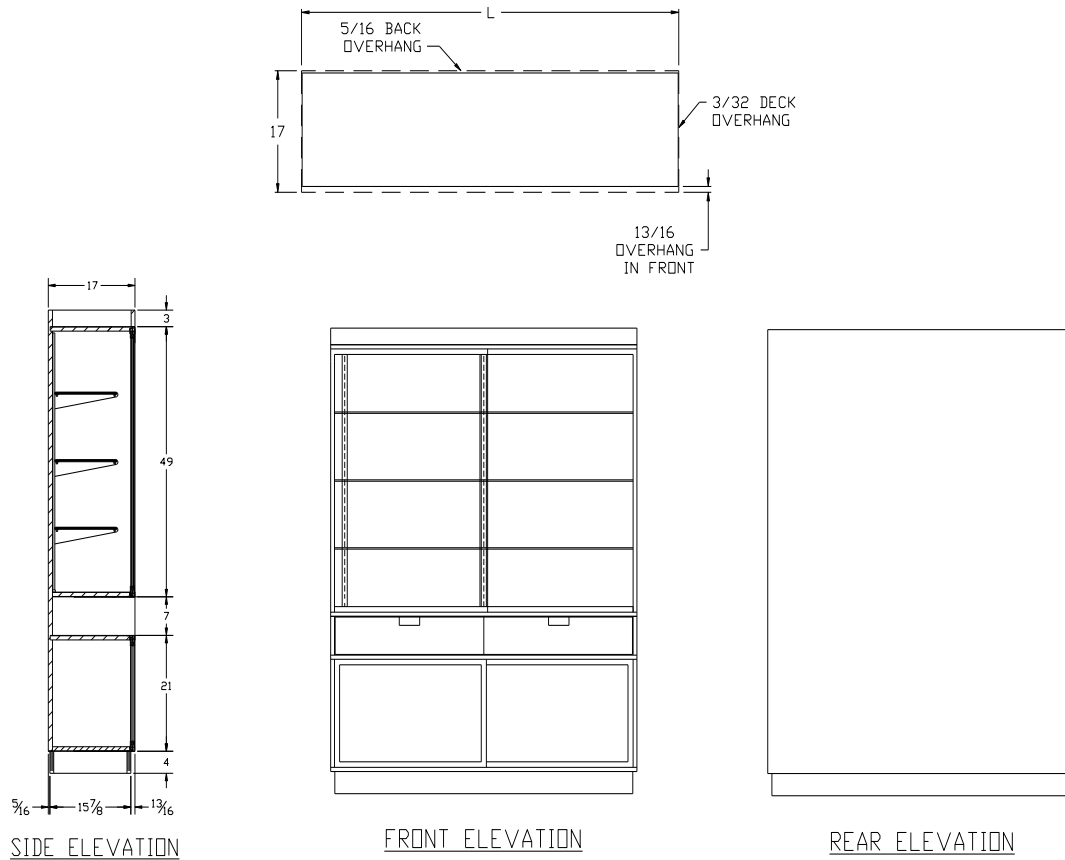
- Laminated Front, Ends, and Interior Finish (TFM)
- 1/4" Tempered Glass Shelves 3-12" Deep Adjustable
- Tempered Glass Sliding Doors on Rollers
- 1 Tier Drawer
- Sliding Framed Panel Storage Doors on Rollers
- Wood Shelf in Storage Area
- 4" Black Kick

SPARTAN SHOWCASE IS A  
DIVISION OF PROCK OPERATIONS™

[sales@spartanshowcase.com](mailto:sales@spartanshowcase.com)  
Phone: 800.325.0775  
Fax: 573.265.5124



# W2550 Series Wall Display Showcase (with Drawers)



Model No.	Dimension L X D X H
W2556	70" x 17" x 84"
W2555	60" x 17" x 84"
W2554	48" x 17" x 84"

Options/Accessories
<ol style="list-style-type: none"> <li>1. HPL Finish Front</li> <li>2. HPL Finish Ends</li> <li>3. Mirror Ends</li> <li>4. Mirror Back</li> <li>5. Slatwall Back (TFM) Raw Grooves 3"OC *Standards and Brackets are included</li> <li>6. Powdercoat Finish Frame</li> <li>7. Light</li> <li>8. Lower Glass Doors &amp; 2 Glass Shelves in Base</li> </ol>

SPARTAN SHOWCASE IS A  
DIVISION OF PROCK OPERATIONS™

sales@spartanshowcase.com  
Phone: 800.325.0775  
Fax: 573.265.5124

