

W2520 Series Wall Display Showcase



Standard Specifications

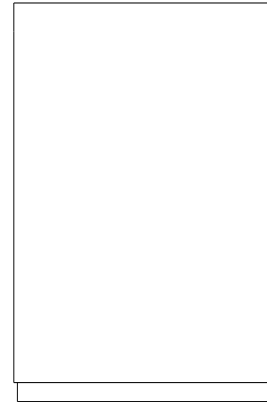
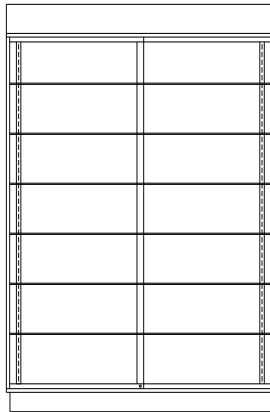
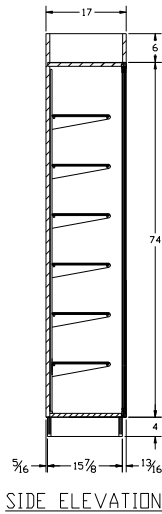
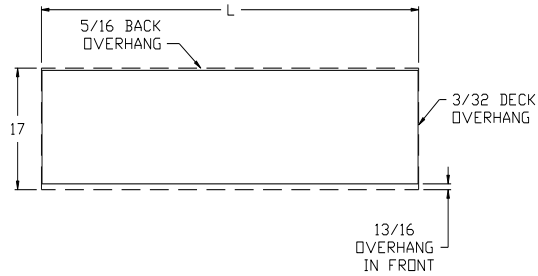
- Laminated Ends, and Interior Finish (TFM)
- 1/4" Tempered Glass Shelves 6-12" Deep Adjustable
- Tempered Glass Sliding Doors on Rollers
- 6" High Facia
- 4" Black Kick

SPARTAN SHOWCASE IS A
DIVISION OF PROCK OPERATIONS™

sales@spartanshowcase.com
Phone: 800.325.0775
Fax: 573.265.5124



W2520 Series Wall Display Showcase



Model No.	Dimension L X D X H
W2526	70" x 17" x 84"
W2525	60" x 17" x 84"
W2524	48" x 17" x 84"

Options/Accessories
<ol style="list-style-type: none"> 1. HPL Finish Front 2. HPL Finish Ends 3. Mirror Ends 4. Mirror Back 5. Slatwall Back (TFM) Raw Grooves 3"OC *Standards and Brackets are included 6. Powdercoat Finish Frame 7. Light

SPARTAN SHOWCASE IS A
DIVISION OF PROCK OPERATIONS™

sales@spartanshowcase.com
Phone: 800.325.0775
Fax: 573.265.5124

