

# F-Series Square Tower Showcases



SQ-72

DSQ-80

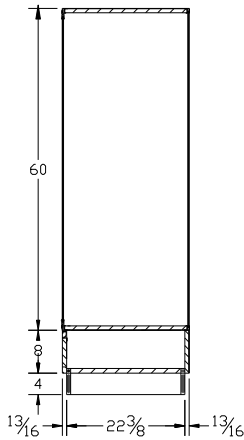
Standard Specifications
<ul style="list-style-type: none"> <li>• Anodized Silver Satin Finish Aluminum Frame &amp; Trim</li> <li>• 1/4" Tempered Glass, Front &amp; Ends</li> <li>• Tempered Glass Shelves Are Adjustable (3)</li> <li>• Laminated Interior Decks: (TFM) White, Black</li> <li>• Laminated Base with Heavy Duty Corner Protectors: (TFM) White, Black, Cherry (High Pressure Laminate (HPL) Formica® or Wilsonart® Standard Offerings Optional)</li> <li>• Framed Tempered Glass Hinge Door with Lock</li> <li>• Black Kick</li> <li>• 8" Crown Includes 2 Spotlights (DSQ80)</li> </ul>

SPARTAN SHOWCASE IS A DIVISION OF PROCK OPERATIONS™

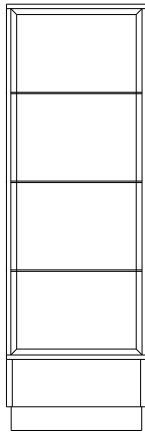
sales@spartanshowcase.com  
 Phone: 800.325.0775  
 Fax: 573.265.5124



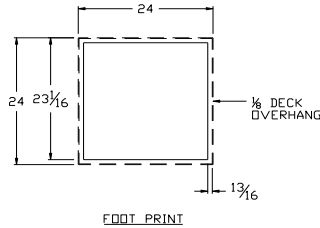
# F-Series Square Tower Showcases



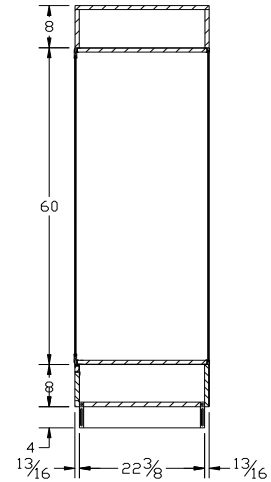
SIDE ELEVATION  
SQ72



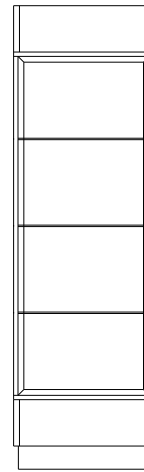
FRONT ELEVATION



FOOT PRINT



SIDE ELEVATION  
DSQ80



FRONT ELEVATION

Model No.	Dimensions: L X D X H	Doors	Options/Accessories:
SQ72 DSQ80	24" x 24" x 72" 24" x 24" x 80"	Hinged, W/Lock Hinged, W/Lock	<ol style="list-style-type: none"> <li>1. HPL Base</li> <li>2. Without Corner Base Protectors</li> <li>3. Powdercoat Finish Frame</li> <li>4. Extra Glass Shelf</li> <li>5. 12"L Cord &amp; Plug (DSQ80)</li> <li>6. UL Listed Label (DSQ80)</li> </ol>

SPARTAN SHOWCASE IS A  
DIVISION OF PROCK OPERATIONS™

sales@spartanshowcase.com

Phone: 800.325.0775

Fax: 573.265.5124

