

F-Series Vitrines

VT70



VT70



VT54

Standard Specifications:

- Anodized Silver Satin Finish Aluminum Frame & Trim
- 1/4" Tempered Glass, Front, Ends & Shelves
- Sliding Tempered Glass Doors W/Lock (VT70)
- Hinged Tempered Glass Door W/Lock
- Laminated Interior Decks: TFM (White, Black, Cherry)
- Standard Finish High Pressure Laminate (HPL) Base with Self Edge Corner (High Pressure Laminate (HPL) Formica® or Wilsonart® Standard Offerings Optional)
- 4" High Black Kick
- Lower Storage Area with Hinged Door & Lock
- (1) Adjustable Storage Shelf

SPARTAN SHOWCASE IS A
DIVISION OF PROCK OPERATIONS™

sales@spartanshowcase.com

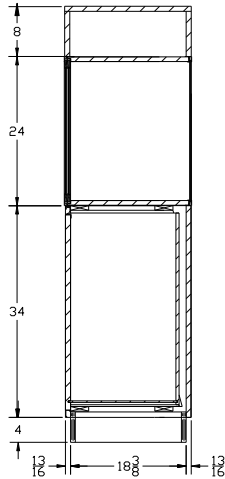
Phone: 800.325.0775

Fax: 573.265.5124

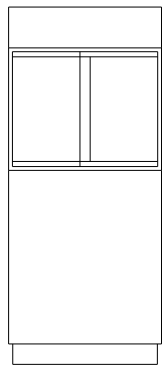
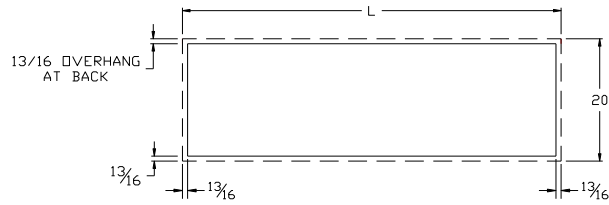


F-Series Vitrines

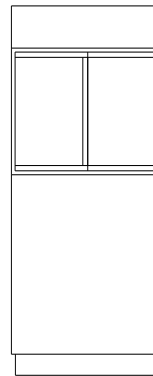
VT70



SIDE ELEVATION



FRONT ELEVATION



REAR ELEVATION

Model No.	Dimensions: L X D X H	Doors
VT70	30" x 20" x 70"	Sliding Glass Doors - W/Lock 8" Crown W/2 Spot Lights
VT54	20" x 20" x 54" Not Shown	Hinged Glass Door-W/Lock

Options/Accessories:

1. Powdercoat Finish Frame
2. Rear Mirror Doors in Place of Glass Doors
3. UL Listed Cabinet Label (VT70)

SPARTAN SHOWCASE IS A
DIVISION OF PROCK OPERATIONS™

sales@spartanshowcase.com

Phone: 800.325.0775

Fax: 573.265.5124

