

CPN - C Series

Curve-Front Candy Cases Non-Climate Controlled



Features & Finishes:

- Curved Glass Front
- Aluminum Framed Sliding Mirror Doors
- Tempered Glass Shelves (1-12", 1-14")
- Mirror Ends
- 6" Black Kick Base
- Std. HPL Exterior Finish
- White HPL Deck
- Top Light with Lamp and Shield
- Cord & Plug
- U.L. Listed

Specifications Subject to change without notice



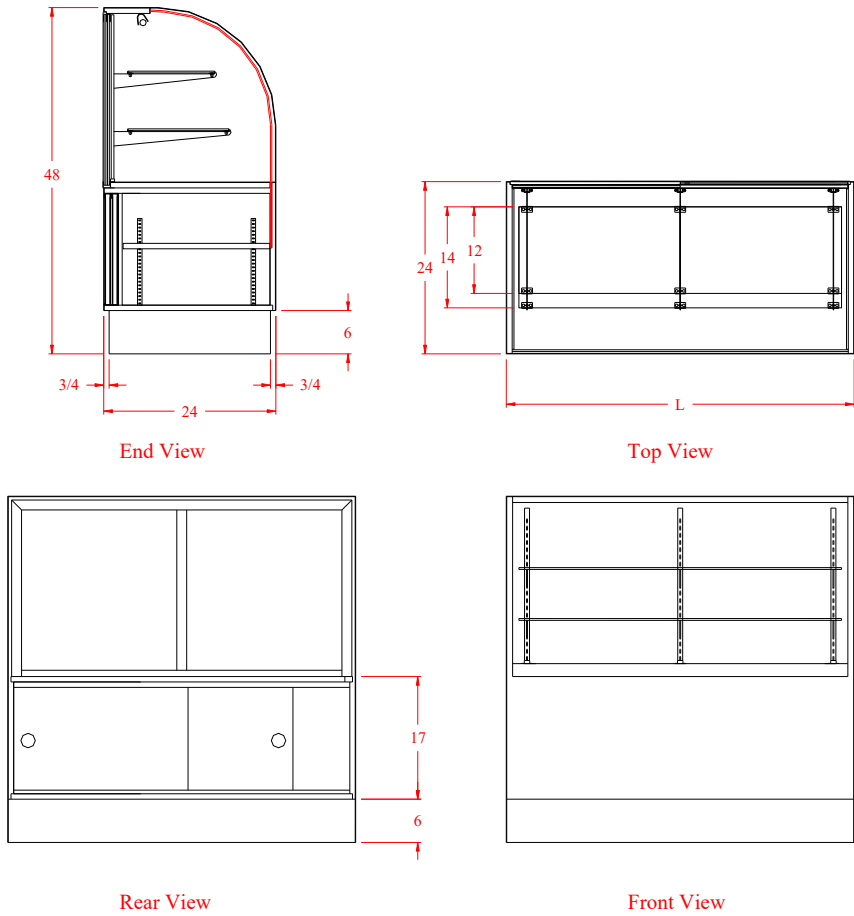
SPARTAN SHOWCASE IS A
DIVISION OF PROCK OPERATIONS™

sales@spartanshowcase.com
Phone: 800.325.0775
Fax: 573.265.5124



CPN - C Series

Curve-Front Candy Cases Non-Climate Controlled



Model No.	Dimensions: L X W X H	Rows of Shelves	Est. Crated Weight	Case Options:
CPN-4C	48 1/4" x 24" x 48"	2	480 lbs.	1. Brasstone or Black Finish 2. Vented Doors 3. Std. HPL Exterior Finish
CPN-5C	59 1/4" x 24" x 48"	2	550 lbs.	
CPN-6C	77 1/4" x 24" x 48"	2	620 lbs.	

Specifications Subject to change without notice

SPARTAN SHOWCASE IS A
DIVISION OF PROCK OPERATIONS™

sales@spartanshowcase.com
Phone: 800.325.0775
Fax: 573.265.5124

