

# F4600 Series Third View Showcase



## Standard Specifications:

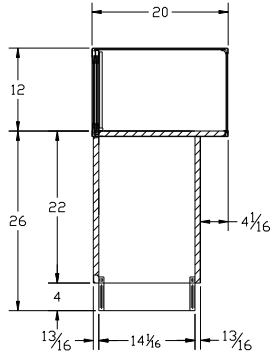
- 12" High Anodized Silver Satin Finish Frame
- 22" High Laminate (TFM) Base with Corner Protectors (White, Black, Cherry)
- 4" High Black Kick
- Interior Decks & Panel Doors (TFM) White or Black
- 1/4" Tempered Glass Tops, Fronts, Ends,

SPARTAN SHOWCASE IS A  
DIVISION OF PROCK OPERATIONS™

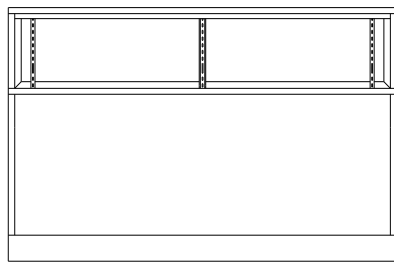
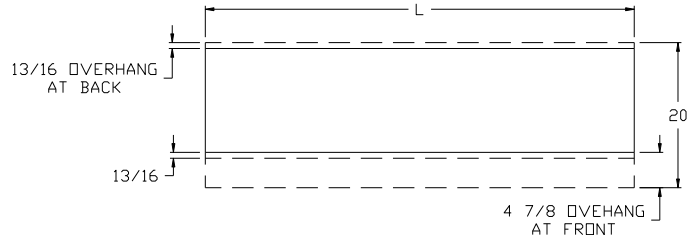
[sales@spartanshowcase.com](mailto:sales@spartanshowcase.com)  
Phone: 800.325.0775  
Fax: 573.265.5124



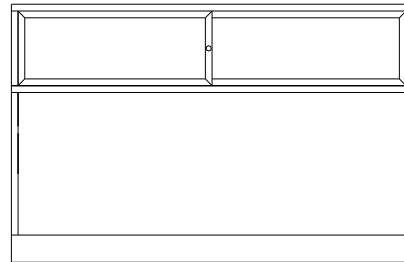
# F4600 Series Third View Showcase



SIDE ELEVATION



FRONT ELEVATION



REAR ELEVATION

Model No.	Dimensions: L X D X H	Doors
F4672	72" x 20" x 38"	Panel
F4606	70" x 20" x 38"	Panel
F4605	60" x 20" x 38"	Panel
F4604	48" x 20" x 38"	Panel
F4603	36" x 20" x 38"	Panel
F4672A	72" x 20" x 38"	Mirror
F4606A	70" x 20" x 38"	Mirror
F4605A	60" x 20" x 38"	Mirror
F4604A	48" x 20" x 38"	Mirror
F4603A	36" x 20" x 38"	Mirror

### Options/Accessories:

- |                            |                                     |
|----------------------------|-------------------------------------|
| 1. Light                   | 7. Flush Front Base                 |
| 2. Lock                    | 8. Clear Glass or Panel Rear Door   |
| 3. HPL Finish Base         | 9. Powdercoat Frame Finished        |
| 4. UL Listed Cabinet Label | 10. Storage Doors & Drawers in Base |
| 5. UL Listed Cord and Plug | 11. Custom Sizes                    |
| 6. Mirror or Solid Ends    |                                     |

SPARTAN SHOWCASE IS A  
DIVISION OF PROCK OPERATIONS™

sales@spartanshowcase.com  
Phone: 800.325.0775  
Fax: 573.265.5124

