

99370 Series Stand-Up Pastry Merchandiser



Standard Features & Finishes

- Anodized Aluminum Frame
- Solid Back
- Glass Ends
- White Interior
- Aluminum Framed, Tempered Glass Hinged Doors (Self-Closing)
- White Wire Shelves (4)
- Adjustable Bag Bins
- Side Lights with Safety Coated Lamps (31" – 2) (40" – 2)
- Top Light & (2) Side Lights with Safety Coated Lamps (44" & 60" Lengths)
- 6" Black Kick Base
- Air Vents (2)
- LPL Exterior Finish
- HPL Interior Deck
- 120 Volts – 60 Cycle – Single Phase
- 12" Cord, Plug, and Switch; located on Ballast Box Rear Crown
- U.L. Listed / U.L. #65

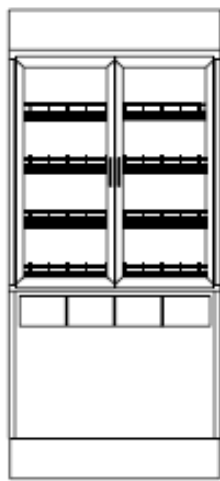


SPARTAN SHOWCASE IS A
DIVISION OF PROCK OPERATIONS™

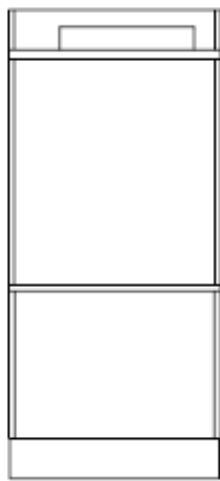
sales@spartanshowcase.com
Phone: 800.325.0775
Fax: 573.265.5124



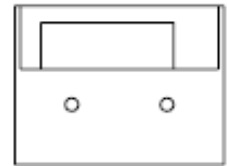
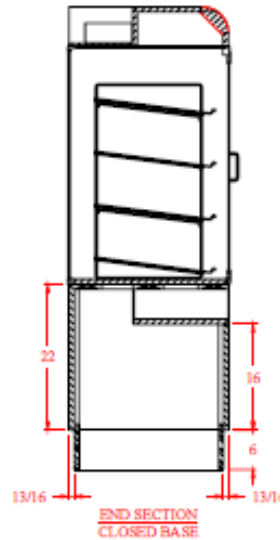
99370 Series Stand-Up Pastry Merchandiser



Front View



Rear View



Top View

Standard Model No.	Dimensions: L X W X H	Rows of Shelves	Est. Crated Weight	Options / Accessories
99370-31	31" x 24" x 70"	4	350 lbs.	<ol style="list-style-type: none"> 1. "ETL" Sanitation Listed (Conforms to NSF STD-2) 2. 6" Swivel Casters (In Place of Black Kick) 3. Bottom Mount Cord & Plug 4. Cart Bumper (Front, Ends, & Corners) 5. Custom Heights (60" – 76") and Lengths (31" – 72") 6. Glass Back 7. Individual Liftup Doors 8. Interior Switch 9. Lower Front Storage Adjustable Shelf 10. Lower Front Storage Doors in Base 11. Mirror Back 12. Mirror Ends 13. Powder Coated (Frame, Hardware, & Lights,) 14. Powder Coated (Frame, Hardware, Lights, & Shelves) 15. Bag Pullout Package Ledge (10" Wide) 16. Bag Removable Ledge (10" Wide) 17. Shelf Lights with Safety Coated Lamps 18. Square Top Fascia 19. Standards, Brackets, & Shelf Clips 20. Standard HPL Exterior 21. Top Light with Safety Coated Lamps (31" & 40") 22. UL #962 Cord
99370-40	39 1/4" x 30" x 70"	4	500 lbs.	
99370-44	44" x 24" x 75"	4	500 lbs.	
99370-60	60" x 24" x 70 "	4	750 lbs.	



SPARTAN SHOWCASE IS A
DIVISION OF PROCK OPERATIONS™

sales@spartanshowcase.com
Phone: 800.325.0775
Fax: 573.265.5124

