

# 97000 Series Straight Front High Volume Non-Refrigerated Display Cases



## Features & Finishes:

- Anodized Aluminum Frame
- Tempered Glass Front
- Glass Ends & Tops
- Top Light & Shelf Lights with Lamps & Shields
- Aluminum Framed Sliding Glass Doors
- White Wire Shelves (40"H - 2)(48"H - 3)
- Open Rear Storage - White Interior
- White HPL Deck
- Black HPL Base
- 12" Cord, Plug & Switch
- U.L. & C.U.L. Listed



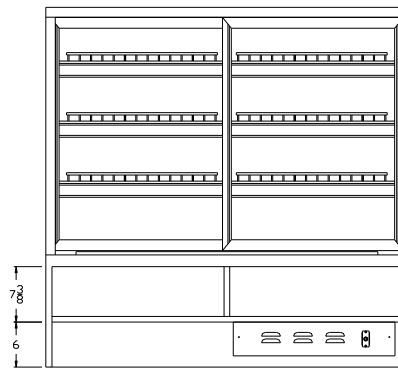
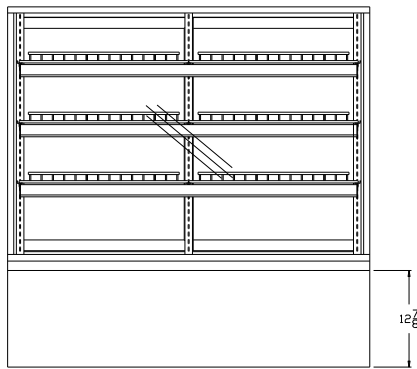
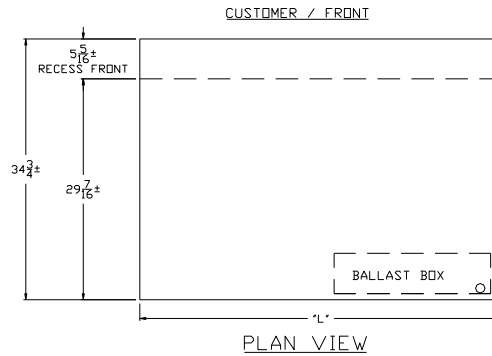
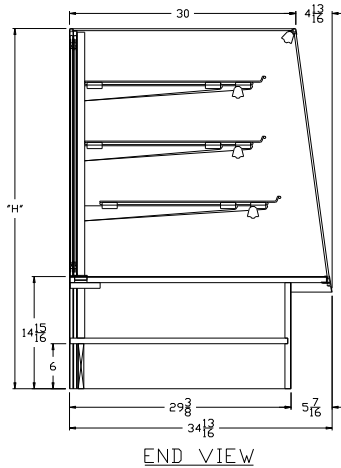
SPARTAN SHOWCASE IS A  
DIVISION OF PROCK OPERATIONS™

sales@spartanshowcase.com  
Phone: 800.325.0775  
Fax: 573.265.5124



# 97000 Series

## Straight Front High Volume Non-Refrigerated Display Cases



Model No.	Dimensions: L X W X H	Rows of Shelves	Est. Crated Weight	Case Options:
97040-48	48" X 34 13/16" X 40"	2	460 lbs.	1. "ETL" Sanitation Listed (Conforms to NSF STD-2) 2. Brasstone or Black Finishes (Frame & Lights Only) 3. Mirror Doors 4. Self Closing Doors 5. Vented Doors 6. Std. HPL Finish Base 7. Mirror Ends 8. Casters or Legs (Adds 7 1/2" to Total Height)
97040-59	59" X 34 13/16" X 40"	2	480 lbs.	
97040-77	77" X 34 13/16" X 40"	2	595 lbs.	
97048-48	48" X 34 13/16" X 48"	3	500 lbs.	
97048-59	59" X 34 13/16" X 48"	3	540 lbs.	
97048-77	77" X 34 13/16" X 48"	3	640 lbs.	

Specifications Subject to change without notice



SPARTAN SHOWCASE IS A  
DIVISION OF PROCK OPERATIONS™

sales@spartanshowcase.com  
Phone: 800.325.0775  
Fax: 573.265.5124

