

W2520 Series Wall Display Showcase



Standard Specifications

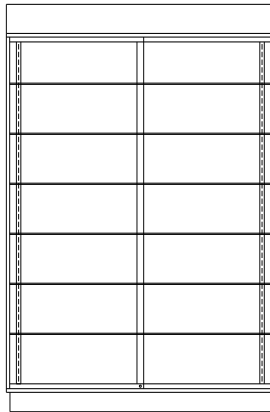
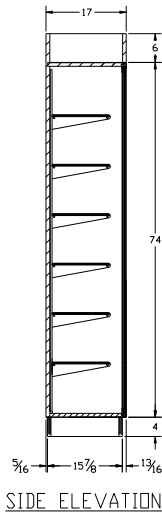
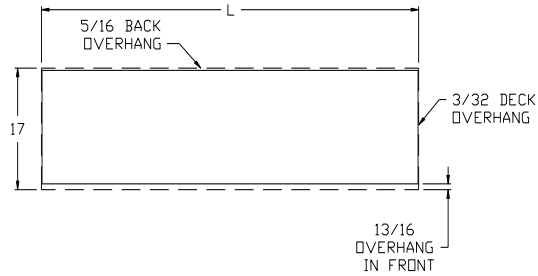
- Laminated Ends, and Interior Finish (TFM)
- 1/4" Tempered Glass Shelves 6-12" Deep Adjustable
- Tempered Glass Sliding Doors on Rollers
- 6" High Facia
- 4" Black Kick

SPARTAN SHOWCASE IS A
DIVISION OF PROCK OPERATIONS™

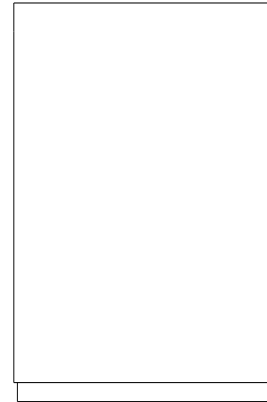
sales@spartanshowcase.com
Phone: 800.325.0775
Fax: 573.265.5124



W2520 Series Wall Display Showcase



FRONT ELEVATION



REAR ELEVATION

Model No.	Dimension L X D X H
W2526	70" x 17" x 84"
W2525	60" x 17" x 84"
W2524	48" x 17" x 84"

Options/Accessories

1. HPL Finish Front
2. HPL Finish Ends
3. Mirror Ends
4. Mirror Back
5. Slatwall Back (TFM) Raw Grooves 3"OC
*Standards and Brackets are included
6. Powdercoat Finish Frame
7. Light

SPARTAN SHOWCASE IS A
DIVISION OF PROCK OPERATIONS™

sales@spartanshowcase.com
Phone: 800.325.0775
Fax: 573.265.5124

