

F1600 Series Full View Showcases



*Shown w/o Corner Base Protectors

Standard Specifications

- Anodized Silver Satin Finish Frame & Trim
- 1/4" Tempered Glass Top, Front & Ends
- Tempered Glass Shelves 1-8" & 1-10" Deep Adjustable
- Laminated Interior Decks & Panel Doors: TFM White or Black
- Laminated Base with Heavy Duty Corner Base Protectors: (TFM) White, Black, Cherry Woodgrain
- HPL (High Pressure Laminate Formica® or Wilsonart Standard Option)
- Black Kick

SPARTAN SHOWCASE IS A
DIVISION OF PROCK OPERATIONS™

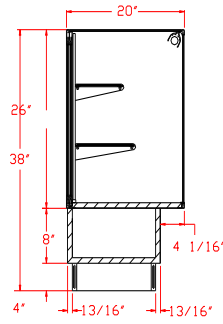
sales@spartanshowcase.com

Phone: 800.325.0775

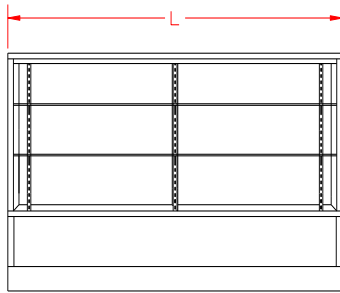
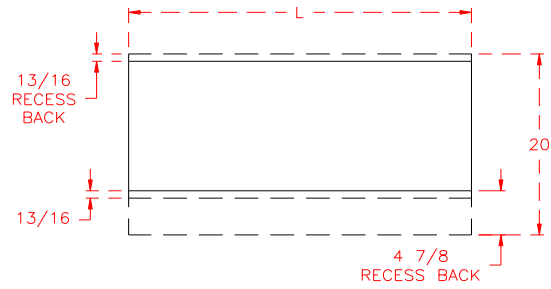
Fax: 573.265.5124



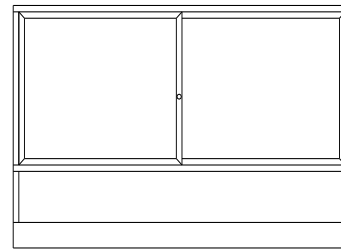
F1600 Series Full View Showcases



END VIEW



FRONT ELEVATION



REAR ELEVATION

Model No.	Dimensions: L X D X H	Doors
F1672	72" x 20" x 38"	Panel
F1606	70" x 20" x 38"	Panel
F1605	60" x 20" x 38"	Panel
F1604	48" x 20" x 38"	Panel
F1603	36" x 20" x 38"	Panel
F1672A	72" x 20" x 38"	Mirror
F1606A	70" x 20" x 38"	Mirror
F1605A	60" x 20" x 38"	Mirror
F1604A	48" x 20" x 38"	Mirror
F1603A	36" x 20" x 38"	Mirror

Case Options:

- | | |
|----------------------------|------------------------------|
| 1. Light | 6. Mirror or Solid Ends |
| 2. Door Lock | 7. Flush Front Base |
| 3. HPL Finish Base | 8. Tempered Glass Doors |
| 4. UL Listed Cabinet Label | 9. Powdercoat Finished Frame |
| 5. UL Listed Cord and Plug | 10. Custom Sizes |

SPARTAN SHOWCASE IS A
DIVISION OF PROCK OPERATIONS™

sales@spartanshowcase.com

Phone: 800.325.0775

Fax: 573.265.5124

