

98300 Series Back-Wall Counters



Features & Finishes:

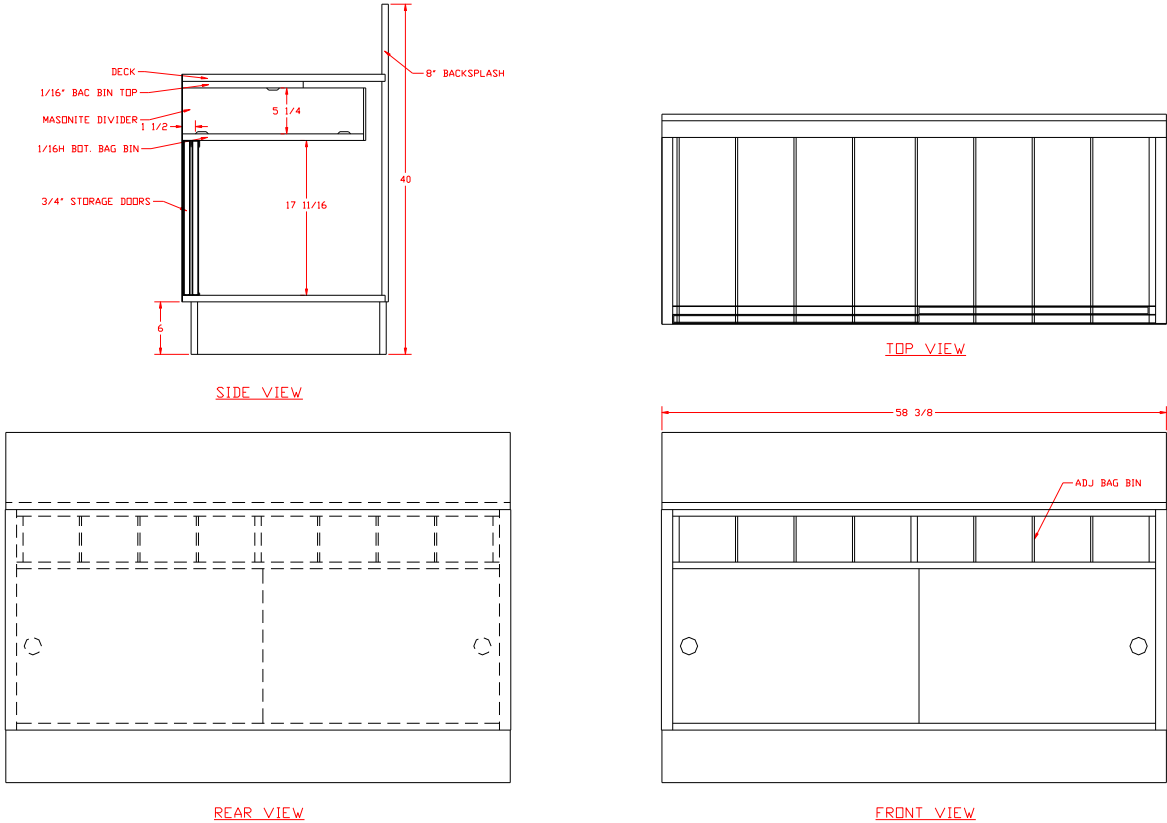
- Anodized Aluminum Frame
- 3/4" Sliding Doors
- 6" Black Kick Base
- Adjustable Bag Bins
- 32" Working Height
- White Interior
- White HPL Top and 8" Back Splash
- Raw Exterior Back
- White HPL Finish Front & Ends

SPARTAN SHOWCASE IS A
DIVISION OF PROCK OPERATIONS™

sales@spartanshowcase.com
Phone: 800.325.0775
Fax: 573.265.5124



98300 Series Back-Wall Counters



Model No.	Dimensions: L X W X H	Est. Crated Weight	Case Options:
98360-24	58 3/8" X 24" X 40"	410 lbs.	1. Adjustable Wood Shelf
98360-30	58 3/8" X 30" X 40"	430 lbs.	

Specifications Subject to change without notice

SPARTAN SHOWCASE IS A
DIVISION OF PROCK OPERATIONS™

sales@spartanshowcase.com
Phone: 800.325.0775
Fax: 573.265.5124



98400 Series Cash & Wrap Counters



Features & Finishes:

- White HPL Finish Front & Ends
- White HPL Counter Top
- White Interior Storage
- 4" Black Kick
- Heavy Duty Protective Corners
- Adjustable Bag Bin(s)
- Adjustable Shelf

SPARTAN SHOWCASE IS A
DIVISION OF PROCK OPERATIONS™

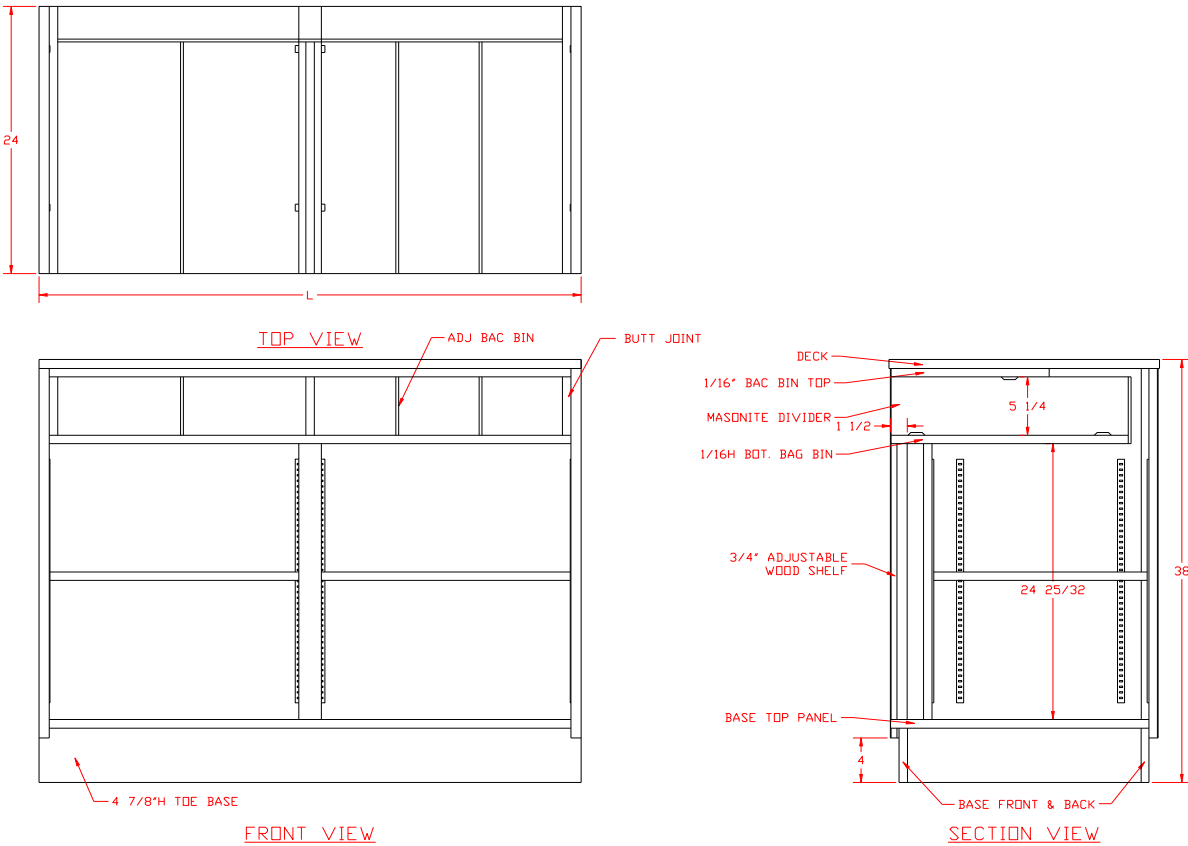
sales@spartanshowcase.com

Phone: 800.325.0775

Fax: 573.265.5124



98400 Series Cash & Wrap Counters



Model No.	Dimensions:			Est. Crated Weight
	L	X W	X H	
98464	48"	X 24"	X 38"	245 lbs.
98465	60"	X 24"	X 38"	265 lbs.
98466	72"	X 24"	X 38"	305 lbs.
98467	84"	X 24"	X 38"	340 lbs.
98468	96"	X 24"	X 38"	380 lbs.

Specifications Subject to change without notice

SPARTAN SHOWCASE IS A
DIVISION OF PROCK OPERATIONS™

sales@spartanshowcase.com
Phone: 800.325.0775
Fax: 573.265.5124

