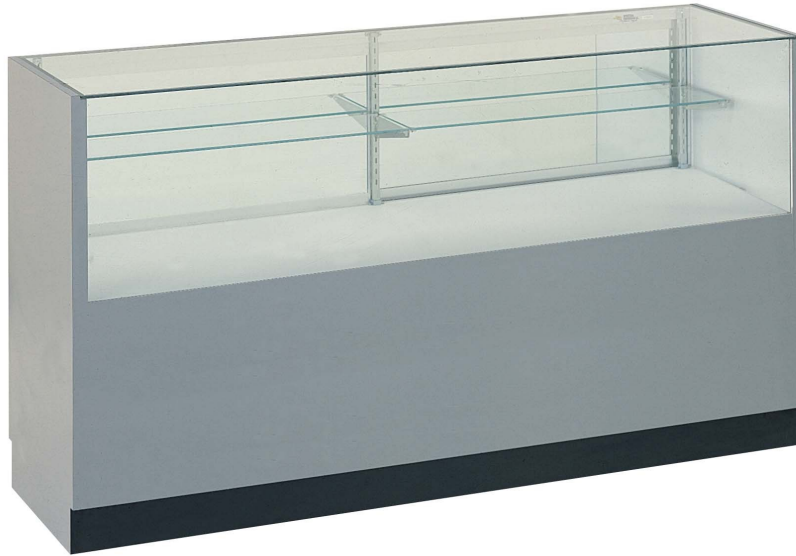


C2900 Series Half View Showcases



Standard Specification

- Slab-End Construction with a Durable High Pressure Laminate (HPL) Finish Interior & Exterior (Formica ®)
- Tempered Glass on Glass Top and Front
- Anodized Silver Satin Finish Aluminum Framed Mirror Doors
- Adjustable Tempered Glass Shelves (1-10" Deep)
- Slimline 1000 Series Octron Light with Concealed Wiring to Remote Ballast in Kick
- Open Rear Storage

SPARTAN SHOWCASE IS A
DIVISION OF PROCK OPERATIONS™

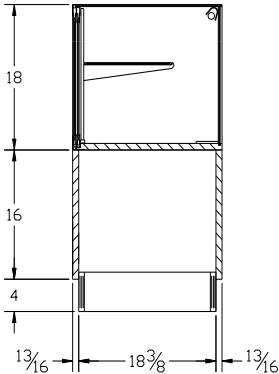
sales@spartanshowcase.com

Phone: 800.325.0775

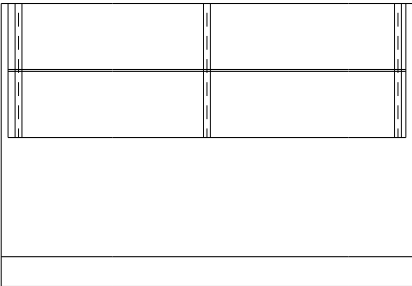
Fax: 573.265.5124



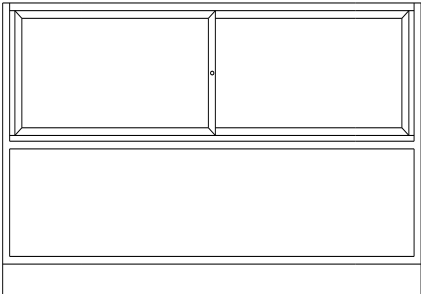
C2900 Series Half View Showcases



SIDE ELEVATION



FRONT ELEVATION



REAR ELEVATION

Model No.	Dimension L X D X H
C2972A	72" x 20" x 38"
C2906A	70" x 20" x 38"
C2905A	60" x 20" x 38"
C2904A	48" x 20" x 38"

Options/Accessories	
1. Powdercoat Finish Frame	6. UL Listed Label
2. Mirror Ends	7. Storage Doors
3. Lock	8. Storage Shelf
4. MaxLed Light	9. Storage Drawers
5. UL Listed Cord & Plug	10. Storage Lock

SPARTAN SHOWCASE IS A
DIVISION OF PROCK OPERATIONS™

sales@spartanshowcase.com
Phone: 800.325.0775
Fax: 573.265.5124

