

98000 Series Service Wallcases



Features & Finishes:

- Anodized Aluminum Trim
- Aluminum Framed, Top Hung, Sliding Glass Doors
- White Wire Shelves (4)
- 3/4" Sliding Storage Doors
- 6" Black Kick Base
- Adjustable Bag Bins
- Unfinished Exterior Back
- White HPL Interior Deck
- White Interior
- White HPL Finish Front & Ends
- Side Lights with Lamps & Shields
- 12" Cord, Plug & Switch
- U.L. & C.U.L. Listed



SPARTAN SHOWCASE IS A
DIVISION OF PROCK OPERATIONS™

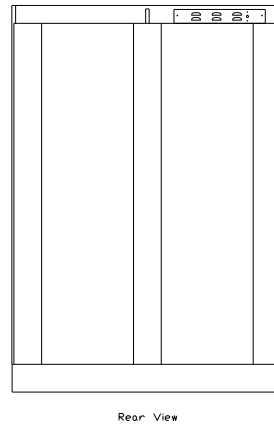
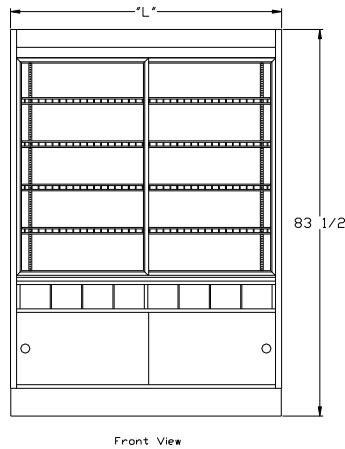
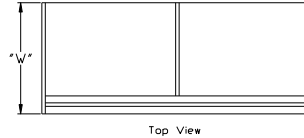
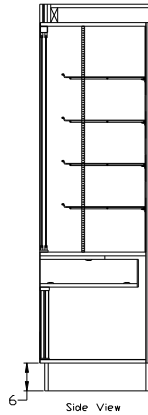
sales@spartanshowcase.com

Phone: 800.325.0775

Fax: 573.265.5124



98000 Series Service Wallcases



Model No.	Dimensions: L X W X H	Rows of Shelves	Est. Crated Weight	No. of Pan Capacity	Case Options:
98060-24	58 1/2" X 24" X 83 1/2"	4	610 lbs.	10	1. Mirror Ends 2. Mirror Back 3. Extra Row Wire Shelf 4. Adjustable Wood Shelf 5. Top Light 6. Shelf Lights
98062-30	62 1/8" X 30" X 83 1/2"	4	710 lbs.	15	
98082-30	80 1/8" X 30" X 83 1/2"	4	950 lbs.	20	
98060-24RL	58 1/2" X 26" X 83 1/2"	4	630 lbs.	10	
98062-30RL	62 1/8" X 32" X 83 1/2"	4	740 lbs.	15	
98080-30RL	80 1/8" X 32" X 83 1/2" <i>RL = (Rear Load Mirror Doors)</i>	4	980 lbs.	20	

Specifications Subject to change without notice

SPARTAN SHOWCASE IS A
DIVISION OF PROCK OPERATIONS™

sales@spartanshowcase.com
Phone: 800.325.0775
Fax: 573.265.5124



98100 Series Service Wallcases Full View



Features & Finishes:

- Anodized Aluminum Trim
- Aluminum Framed Top Hung Sliding Glass Doors
- White Wire Shelves (7)
- White HPL Deck
- White Interior
- Unfinished Exterior Back
- White HPL Finish Front & Ends
- Side Lights with Lamps & Shields
- 12" Cord, Plug, & Switch
- U.L. & C.U.L. Listed

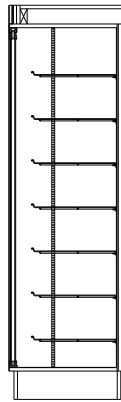


SPARTAN SHOWCASE IS A
DIVISION OF PROCK OPERATIONS™

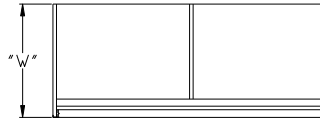
sales@spartanshowcase.com
Phone: 800.325.0775
Fax: 573.265.5124



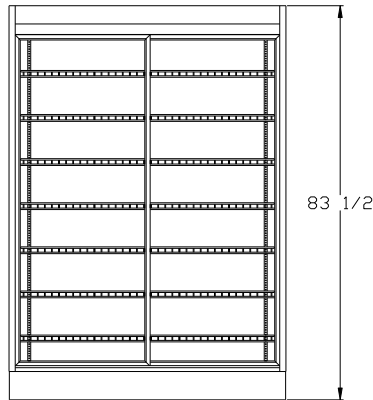
98100 Series Service Wallcases Full View



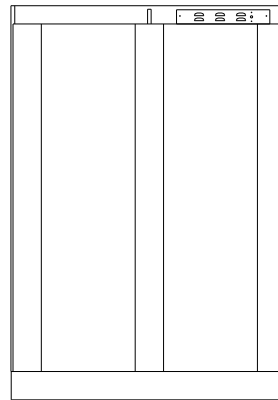
Side View



Top View



Front View



Rear View

Model No.	Dimensions: L X W X H	Rows of Shelves	Est. Crated Weight	No. of Pan Capacity	Case Options:
98160-24	58 1/2" X 24" X 83 1/2"	7	595 lbs.	16	1. Mirror Ends 2. Mirror Back 3. Extra Row Wire Shelf 4. Adjustable Wood Shelf 5. Top Light 6. Shelf Lights
98162-30	62 1/8" X 30" X 83 1/2"	7	660 lbs.	24	
98180-30	80 1/8" X 30" X 83 1/2"	7	780 lbs.	32	

Specifications Subject to change without notice



SPARTAN SHOWCASE IS A
DIVISION OF PROCK OPERATIONS™

sales@spartanshowcase.com
Phone: 800.325.0775
Fax: 573.265.5124

