

F1600 Series Full View Showcases



*Shown w/o Corner Base Protectors

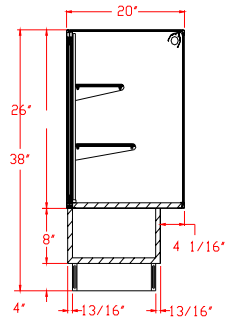
Standard Specifications

- Anodized Silver Satin Finish Frame & Trim
- 1/4" Annealed Float Glass Top, Front, Ends, & Shelves
- Glass Shelves are Adjustable
- Laminated Interior Decks & Panel Doors: Low Pressure Laminate (LPL) Beige, White, Grey or Black
- Laminated Base with Heavy Duty Corner Base Protectors: (LPL) Beige, Black, Grey, White, Walnut, Maple, Oak, or Cherry (High Pressure Laminate (HPL) Formica® or Wilsonart® Standard Offerings Optional)
- Black Kick
- 1-8" & 1-10" Glass Shelves

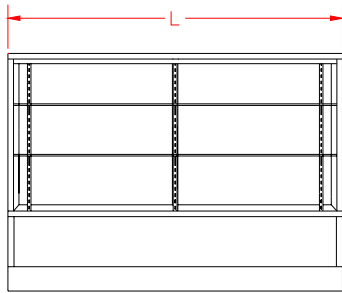
P. O. BOX 470
Union, MO 63084

Phone: 1.800.325.0775
Fax: 1.636.583.4067

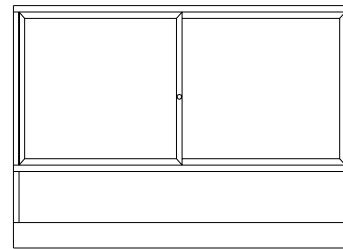
F1600 Series Full View Showcases



END VIEW



FRONT ELEVATION



REAR ELEVATION

| Model No. | Dimensions: L X D X H | Doors |
|-----------|--------------------------|--------|
| F1672 | 72" x 20" x 38" | Panel |
| F1606 | 70" x 20" x 38" | Panel |
| F1605 | 60" x 20" x 38" | Panel |
| F1604 | 48" x 20" x 38" | Panel |
| F1603 | 36" x 20" x 38" | Panel |
| F1672A | 72" x 20" x 38" | Mirror |
| F1606A | 70" x 20" x 38" | Mirror |
| F1605A | 60" x 20" x 38" | Mirror |
| F1604A | 48" x 20" x 38" | Mirror |
| F1603A | 36" x 20" x 38" | Mirror |

| Case Options: | |
|----------------------------|---|
| 1. Light | 6. Mirror or Solid Ends |
| 2. Door Lock | 7. Flush Front Base |
| 3. HPL Finish Base | 8. Clear Glass Doors |
| 4. UL Listed Cabinet Label | 9. Gold, Brassstone, or Powdercoat Finished Frame |
| 5. UL Listed Cord and Plug | 10. Custom Sizes |

P. O. BOX 470
Union, MO 63084

Phone: 1.800.325.0775
Fax: 1.636.583.4067