

# 99370 Series

## Stand-Up Pastry Merchandiser



### Features & Finishes

- Anodized Aluminum Frame
- Glass Ends
- White Interior
- Aluminum Framed, Tempered Glass, Hinged Doors (Self-Closing)
- White Wire Shelves (4)
- Adjustable Bag Bin(s)
- Side Lights with Lamps and Shields (31"- 2) (40"- 2)
- Top Light and Side Lights with Lamps and Shields (60"L Only)
- 6" Black Kick Base
- Air Vents (2)
- White LPL Exterior Finish
- White HPL Interior Deck
- 12" Cord, Plug and Switch
- Solid Back
- U.L. Listed



Email: [sales@spartanshowcase.com](mailto:sales@spartanshowcase.com)

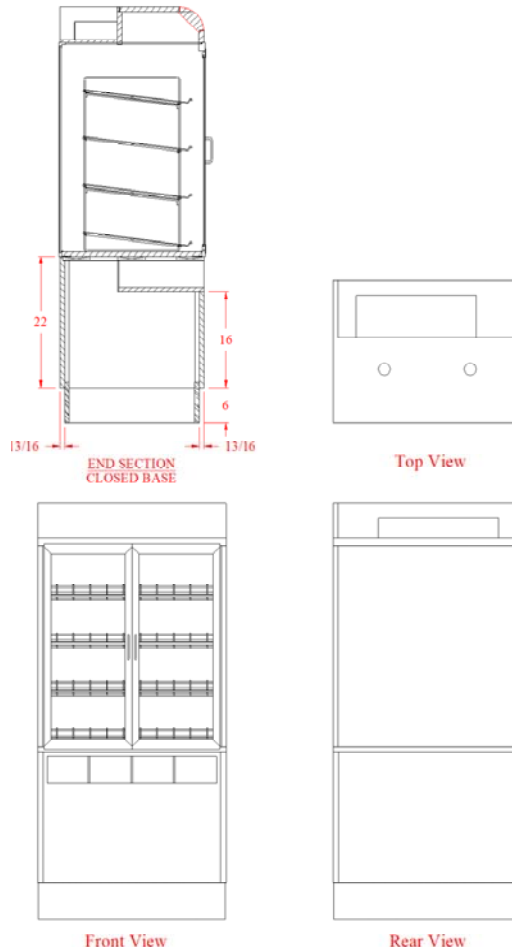
[www.spartanshowcase.com](http://www.spartanshowcase.com)

321 E. Hardy St.  
St. James, MO 65559

Phone: 1.800.356.8351  
Fax: 1.573.265.5124

# 99370 Series

## Stand-Up Pastry Merchandiser



Model No.	Dimensions: L X W X H	Rows of Shelves	Est. Crated Weight	Case Options:
99370-31	31" x 24" x 70"	4	350 lbs.	<ol style="list-style-type: none"> <li>1. "ETL" Sanitation Listed (Conforms to NSF STD-7)</li> <li>2. Std. HPL Exterior</li> <li>3. Mirror Ends</li> <li>4. Mirror Back</li> <li>5. Lower Front Storage Doors</li> <li>6. 6" Swivel Casters (In Place of Black Kick)</li> <li>7. Removable Bag Ledge(10" Wide)</li> <li>8. Bottom Mount Cord and Plug</li> <li>9. Individual Lift-Up Doors</li> </ol>
99370-40	39 1/4" x 30" x 70"	4	500 lbs.	
99370-60	60" x 24" x 70"	4	750 lbs.	

Specifications Subject to change without notice



Email: [sales@spartanshowcase.com](mailto:sales@spartanshowcase.com)

[www.spartanshowcase.com](http://www.spartanshowcase.com)

321 E. Hardy St.  
St. James, MO 65559

Phone: 1.800.356.8351  
Fax: 1.573.265.5124