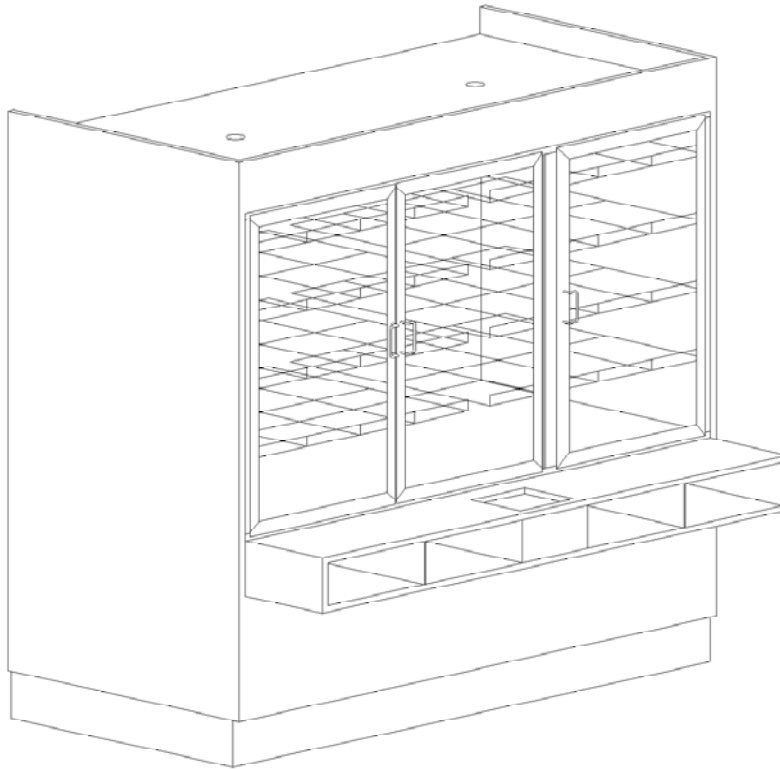


99000 Series Self-Serve Wallcases



Features & Finishes:

- Self-Closing Framed Glass Doors (62"L - 3)(80"L - 4)
- White Wire Shelves (4)
- Top Light with Lamp & Shield
- Vertical Lights with Lamps and Shields (62"- 2)(80"- 3)
- Solid Back
- Lower Front Panel
- Pullout Package Ledge with Tissue Compartment
- Adjustable Bag Bins
- White Interior
- White HPL Finish Front & Ends
- 6" Kick Base
- 12" Cord, Plug & Switch
- U.L. and C.U.L. Listed



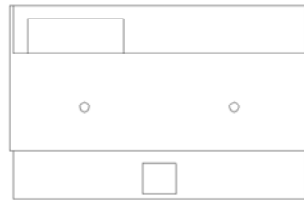
321 E. Hardy St.
St. James, MO 65559

Phone: 1.800.356.8351
Fax: 1.573.265.5124

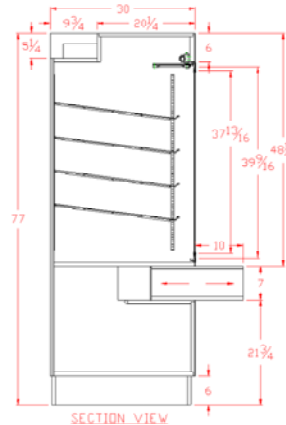
Email: sales@spartanshowcase.com

www.spartanshowcase.com

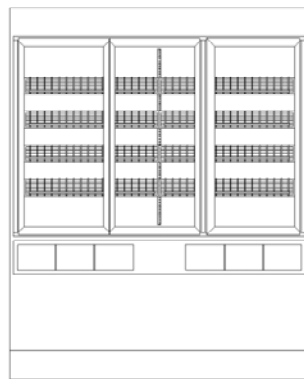
99000 Series Self-Serve Wallcases



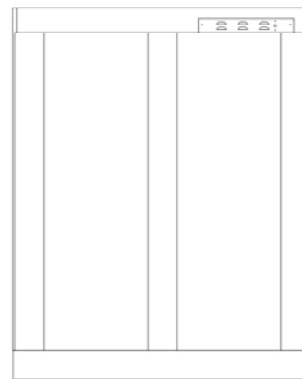
TOP VIEW



SECTION VIEW



FRONT VIEW



REAR VIEW

Model No.	Dimensions: L X W X H	Rows of Shelves	No. of Pan Capacity	Est. Crated Weight	Case Options:
93077-62	62" X 30" X 77"	4	15	710 lbs.	1. "ETL" Sanitation Listed (Conforms to NSF STD-2) 2. Mirror Ends 3. Mirror Doors 4. Lower Rear Storage Doors 5. Lower Front Storage Doors 6. Adjustable Wood shelf (Storage area) 7. Radius Curve Top Facia (6" High) 8. Cart Bumper (Front, Ends & Corners)
99077-80	80" X 30" X 77"	4	20	810 lbs.	
99077-62RL	62" X 32" X 77"	4	15	800 lbs.	
99077-80RL	80" X 32" X 77"	4	20	900 lbs.	
	<i>RL=Rear Loading, Mirror Doors</i>				

Specifications Subject to change without notice



321 E. Hardy St.
St. James, MO 65559

Phone: 1.800.356.8351
Fax: 1.573.265.5124



Email: sales@spartanshowcase.com

www.spartanshowcase.com